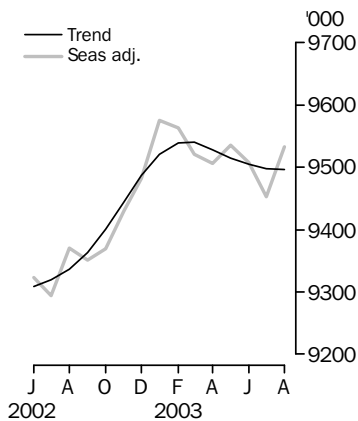


LABOUR FORCE

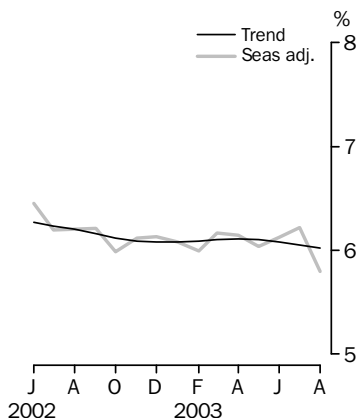
AUSTRALIA

EMBARGO: 11.30AM (CANBERRA TIME) THURS 11 SEP 2003

Employed persons



Unemployment rate



INQUIRIES

- For further information about these and related statistics, contact the National Information and Referral Service on 1300 135 070 or Craig Blair on (02) 6252 6525.

KEY FIGURES

	Jul 2003	Aug 2003	Jul 03 to Aug 03
Trend			
Employed persons ('000)	9 498.2	9 496.1	0.0 %
Unemployed persons ('000)	612.1	608.3	-0.6 %
Unemployment rate (%)	6.1	6.0	0.0 pts
Participation rate (%)	63.6	63.5	-0.1 pts
Seasonally Adjusted			
Employed persons ('000)	9 452.3	9 532.9	80.6
Unemployed persons ('000)	626.9	586.9	-40.1
Unemployment rate (%)	6.2	5.8	-0.4 pts
Participation rate (%)	63.4	63.5	0.2 pts

KEY POINTS

TREND ESTIMATES

- EMPLOYMENT decreased to 9,496,100.
- UNEMPLOYMENT decreased to 608,300.
- UNEMPLOYMENT RATE decreased marginally to 6.0%.
- PARTICIPATION RATE decreased to 63.5%.

SEASONALLY ADJUSTED ESTIMATES

- EMPLOYMENT increased by 80,600 to 9,532,900. Full-time employment increased by 63,500 to 6,821,400 and part-time employment increased by 17,100 to 2,711,500.
- UNEMPLOYMENT decreased by 40,100 to 586,900. The number of persons looking for full-time work decreased by 26,500 to 439,400 and the number of persons looking for part-time work decreased by 13,600 to 147,400.
- UNEMPLOYMENT RATE decreased by 0.4 percentage points to 5.8%. Both the male and female rates also decreased by 0.4 percentage points to 5.7% and 6.0% respectively. NSW 5.4% (6.4% last month), Vic 5.5% (5.7%), Qld 6.6% (6.8%), SA 5.8% (6.0%), WA 6.0% (6.2%), Tas 6.9% (6.7%).
- PARTICIPATION RATE increased by 0.2 percentage points to 63.5%.

NOTES

FORTHCOMING ISSUES

<i>ISSUE</i>	<i>RELEASE DATE</i>
September 2003	9 October 2003
October 2003	6 November 2003
November 2003	11 December 2003
December 2003	15 January 2004
January 2004	12 February 2004
February 2004	11 March 2004



FORTHCOMING CHANGES

In October 2003, the ABS will begin the progressive implementation of computer assisted interviewing (CAI) into the Labour Force Survey (LFS). LFS interviewers currently record survey responses by hand onto a paper questionnaire; under CAI, interviewers will record responses directly onto an electronic questionnaire in a laptop computer. Most other ABS household surveys currently use CAI.

Over the last two years, the ABS has been developing and testing a CAI version of the current LFS questionnaire and associated systems and procedures. The CAI version has been designed to replicate the current questionnaire and procedures as closely as possible. This has been done to minimise the chance of any impact on labour force series from the change to CAI.

In October 2003, approximately 10% of LFS interviews will be conducted using CAI. The proportion of interviews conducted using CAI will remain at 10% until January 2004. Subject to the results of impact studies, it is intended to increase the use of CAI to 40% of interviews in February 2004, then to 70% in April 2004, and finally to 100% in May 2004.

The impact studies will involve extensive analysis of survey data each month, and are expected to confirm that the change in method is not having a significant impact on survey estimates.

Users will be informed of the progress of CAI implementation, including the results of impact studies, through updates in this publication.

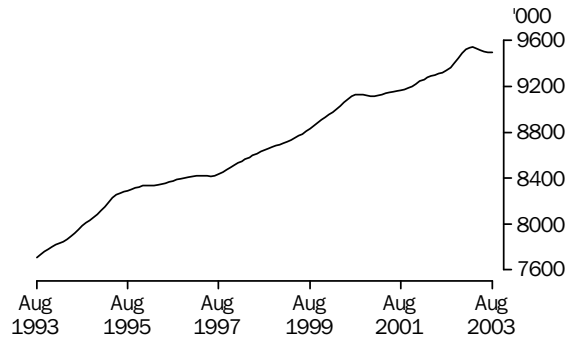
For further information please contact Craig Blair on (02) 6252 6525.

Dennis Trewin
Australian Statistician

PRINCIPAL LABOUR FORCE SERIES TREND ESTIMATES

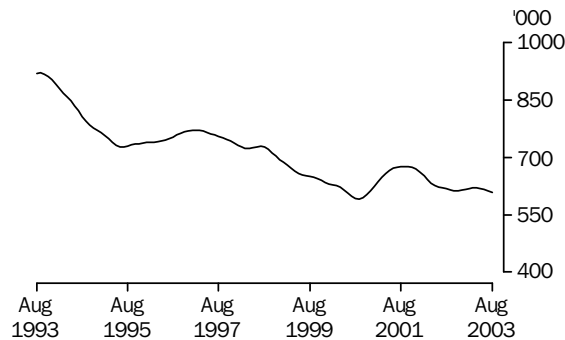
EMPLOYED PERSONS

The trend estimate of employed persons generally rose from a low of 7,634,000 in January 1993 to 9,129,300 in September 2000. The trend then fell slightly to 9,112,900 in December 2000, before rising to 9,540,200 in March 2003. The trend has since fallen to stand at 9,496,100 in August 2003.



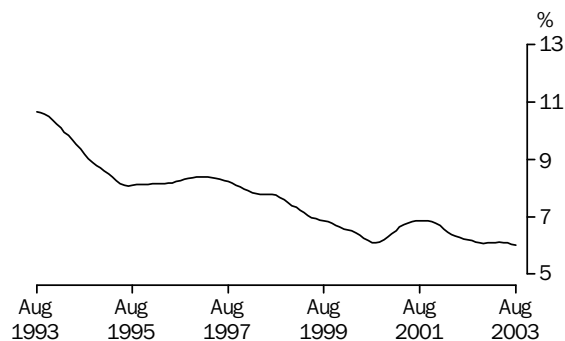
UNEMPLOYED PERSONS

The trend estimate of unemployed persons fell rapidly from 920,600 in September 1993 to 728,100 in July 1995. The trend then rose to 771,800 in February 1997, before falling to 590,900 in September 2000. After rising to 675,900 in October 2001, the trend has generally fallen to stand at 608,300 in August 2003.



UNEMPLOYMENT RATE

The trend unemployment rate fell rapidly from 10.7% in August 1993 to 8.1% in July 1995. The trend then rose slowly until February 1997, before falling to 6.1% in September 2000. The trend rate then rose to 6.9% in September 2001, before falling to 6.1% in October 2002. Since then, the trend has remained relatively stable, and stands at 6.0% in August 2003.

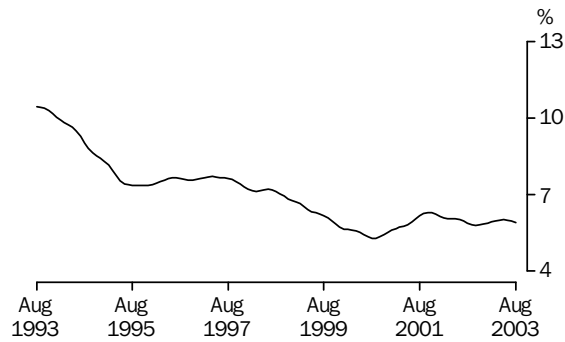


STATES TREND ESTIMATES

UNEMPLOYMENT RATE

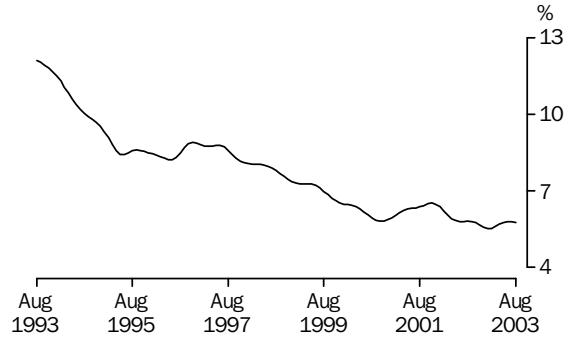
NEW SOUTH WALES

The trend estimate of the unemployment rate for New South Wales fell steadily from 10.7% in February 1993 to 7.4% in November 1995. The trend then rose gradually, reaching 7.7% in April 1997, before falling to 5.3% in September 2000. The trend rate then rose to 6.3% in October 2001, before generally falling to stand at 5.9% in August 2003.



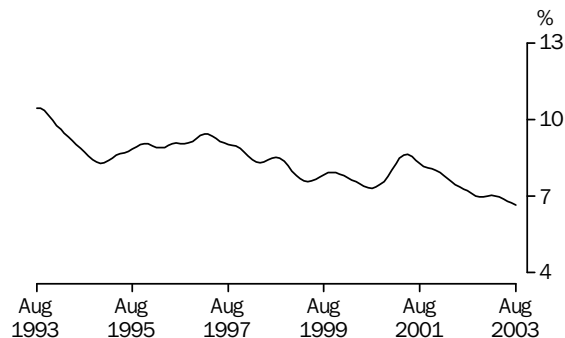
VICTORIA

The trend estimate of the unemployment rate for Victoria decreased from a peak of 12.1% in August 1993 to 8.2% in June 1996. The trend then rose until November 1996, before falling steadily to 5.8% in October 2000. The trend then rose to 6.5% in November 2001, before decreasing to 5.8% in August 2003.



QUEENSLAND

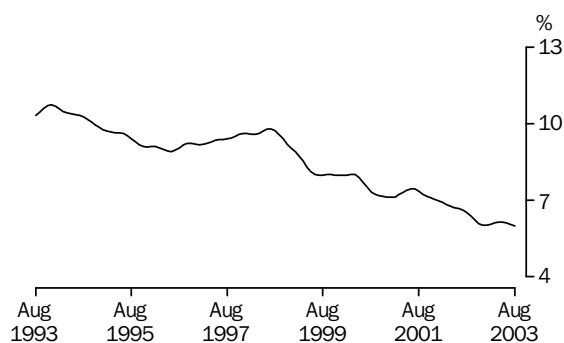
The trend estimate of the unemployment rate for Queensland decreased from a peak of 10.5% in September 1993 to 8.3% in December 1994. The trend then rose to 9.5% in February 1997, before generally falling to 7.3% in August 2000. After rising to 8.6% in May 2001, the trend rate has fallen to stand at 6.7% in August 2003.



STATES TREND ESTIMATES *continued*

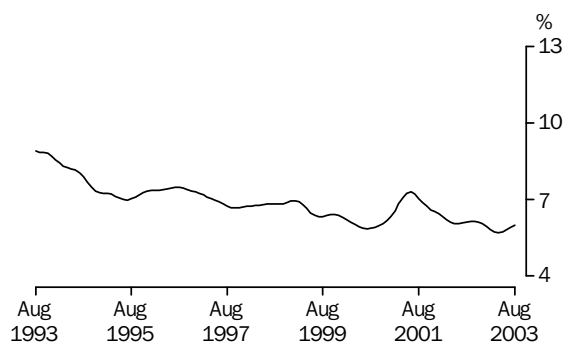
SOUTH AUSTRALIA

The trend estimate of the unemployment rate for South Australia declined from 11.2% in February 1993 to 8.9% in June 1996. The trend then rose slowly to 9.8% in July 1998. Apart from a small increase in early 2001, the trend rate has generally fallen for the last five years, and stands at 6.0% in August 2003.



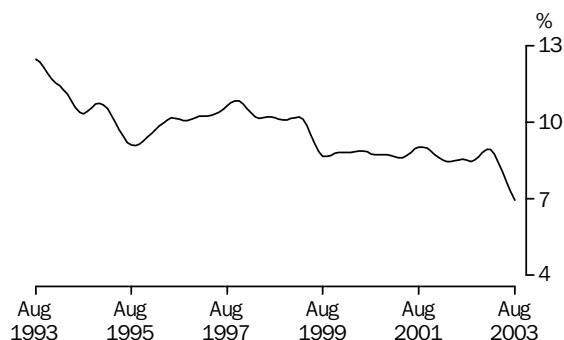
WESTERN AUSTRALIA

The trend estimate of the unemployment rate for Western Australia fell to 7.0% in July 1995. The trend then rose slightly to 7.5% in July 1996 before generally falling to 5.9% in July 2000. The trend then rose sharply to 7.3% in June 2001, before falling to stand at 6.0% in August 2003.



TASMANIA

The trend estimate of the unemployment rate for Tasmania fell from a peak of 12.5% in August 1993 to 9.1% in September 1995. After rising to 10.8% in October 1997, the trend generally fell to 8.7% in September 1999. The trend estimate remained relatively steady until early 2003, then decreased sharply to stand at 7.0% in August 2003.



LABOUR FORCE STATUS (AGED 15 AND OVER), Original

Month	EMPLOYED			UNEMPLOYED			Labour force	Not in labour force	Civilian population aged 15 and over	Unemployment rate	Participation rate
	Full time	Part time	Total	Looking for f/t work	Looking for p/t work	Total					
	'000	'000	'000	'000	'000	'000	'000	'000	'000	%	%
MALES											
2002											
June	4 415.9	805.2	5 221.1	297.5	55.0	352.4	5 573.5	2 135.0	7 708.6	6.3	72.3
July	4 447.8	777.3	5 225.1	273.4	47.5	320.9	5 546.0	2 172.6	7 718.6	5.8	71.9
August	4 395.0	785.9	5 180.9	276.4	64.8	341.3	5 522.2	2 206.5	7 728.7	6.2	71.5
September	4 475.8	768.6	5 244.4	287.3	68.2	355.5	5 599.9	2 138.8	7 738.7	6.3	72.4
October	4 430.8	794.6	5 225.4	265.2	56.3	321.4	5 546.9	2 201.4	7 748.3	5.8	71.6
November	4 450.4	775.3	5 225.7	270.0	56.1	326.1	5 551.8	2 206.0	7 757.8	5.9	71.6
December	4 556.1	767.7	5 323.8	285.8	67.9	353.7	5 677.5	2 089.9	7 767.4	6.2	73.1
2003											
January	4 511.4	736.0	5 247.3	316.7	63.9	380.6	5 627.9	2 151.2	7 779.1	6.8	72.3
February	4 532.8	739.5	5 272.2	309.3	67.1	376.4	5 648.6	2 142.1	7 790.7	6.7	72.5
March	4 493.9	786.5	5 280.4	289.6	60.1	349.8	5 630.2	2 172.2	7 802.4	6.2	72.2
April	4 468.8	794.8	5 263.6	288.2	69.4	357.6	5 621.2	2 191.5	7 812.7	6.4	71.9
May	4 488.8	780.9	5 269.7	283.7	60.3	344.0	5 613.7	2 209.4	7 823.1	6.1	71.8
June	4 473.0	800.9	5 274.0	282.2	56.5	338.7	5 612.7	2 220.8	7 833.5	6.0	71.6
July	4 503.9	787.6	5 291.5	261.9	52.8	314.6	5 606.1	2 239.1	7 845.2	5.6	71.5
August	4 490.8	780.3	5 271.0	258.9	50.3	309.2	5 580.3	2 276.6	7 856.9	5.5	71.0
FEMALES											
2002											
June	2 196.8	1 921.6	4 118.4	181.5	90.5	272.0	4 390.4	3 527.8	7 918.2	6.2	55.4
July	2 250.8	1 872.1	4 122.9	150.8	86.1	236.9	4 359.8	3 568.9	7 928.7	5.4	55.0
August	2 248.3	1 880.8	4 129.1	164.7	90.1	254.8	4 383.9	3 555.2	7 939.1	5.8	55.2
September	2 304.5	1 898.5	4 203.0	167.4	105.5	273.0	4 475.9	3 473.7	7 949.7	6.1	56.3
October	2 260.9	1 904.2	4 165.2	150.9	97.5	248.4	4 413.6	3 545.8	7 959.4	5.6	55.5
November	2 276.2	1 918.8	4 195.0	166.8	83.7	250.5	4 445.5	3 523.7	7 969.2	5.6	55.8
December	2 354.8	1 912.9	4 267.7	175.0	95.5	270.5	4 538.2	3 440.8	7 979.0	6.0	56.9
2003											
January	2 332.3	1 860.0	4 192.3	191.3	80.9	272.2	4 464.5	3 526.6	7 991.1	6.1	55.9
February	2 335.6	1 908.1	4 243.8	199.4	103.9	303.3	4 547.1	3 456.1	8 003.1	6.7	56.8
March	2 268.2	1 950.0	4 218.2	200.1	106.9	307.0	4 525.2	3 490.0	8 015.2	6.8	56.5
April	2 261.8	1 972.2	4 234.0	176.9	95.3	272.2	4 506.2	3 520.0	8 026.1	6.0	56.1
May	2 276.7	1 972.2	4 248.9	182.8	94.1	276.9	4 525.8	3 511.2	8 037.1	6.1	56.3
June	2 237.4	2 012.3	4 249.6	179.1	84.6	263.6	4 513.3	3 534.8	8 048.0	5.8	56.1
July	2 294.7	1 921.7	4 216.4	165.4	87.9	253.4	4 469.7	3 591.2	8 060.9	5.7	55.4
August	2 247.2	1 954.2	4 201.4	163.4	90.9	254.3	4 455.6	3 618.2	8 073.8	5.7	55.2
PERSONS											
2002											
June	6 612.8	2 726.7	9 339.5	478.9	145.5	624.4	9 964.0	5 662.8	15 626.7	6.3	63.8
July	6 698.6	2 649.4	9 348.0	424.2	133.6	557.8	9 905.8	5 741.5	15 647.3	5.6	63.3
August	6 643.4	2 666.7	9 310.1	441.1	154.9	596.1	9 906.1	5 761.7	15 667.8	6.0	63.2
September	6 780.3	2 667.1	9 447.4	454.7	173.7	628.5	10 075.9	5 612.5	15 688.4	6.2	64.2
October	6 691.7	2 698.9	9 390.6	416.1	153.8	569.9	9 960.5	5 747.2	15 707.7	5.7	63.4
November	6 726.6	2 694.1	9 420.7	436.8	139.8	576.6	9 997.3	5 729.7	15 727.0	5.8	63.6
December	6 910.9	2 680.7	9 591.5	460.7	163.4	624.1	10 215.7	5 530.7	15 746.4	6.1	64.9
2003											
January	6 843.7	2 596.0	9 439.7	507.9	144.8	652.7	10 092.4	5 677.7	15 770.1	6.5	64.0
February	6 868.4	2 647.6	9 516.0	508.7	170.9	679.7	10 195.7	5 598.1	15 793.8	6.7	64.6
March	6 762.1	2 736.5	9 498.6	489.8	167.0	656.8	10 155.4	5 662.2	15 817.6	6.5	64.2
April	6 730.6	2 767.1	9 497.7	465.1	164.7	629.7	10 127.4	5 711.5	15 838.9	6.2	63.9
May	6 765.5	2 753.1	9 518.6	466.5	154.4	620.9	10 139.5	5 720.6	15 860.2	6.1	63.9
June	6 710.4	2 813.2	9 523.6	461.3	141.0	602.4	10 125.9	5 755.6	15 881.6	5.9	63.8
July	6 798.6	2 709.2	9 507.9	427.3	140.7	568.0	10 075.9	5 830.3	15 906.1	5.6	63.3
August	6 738.0	2 734.4	9 472.4	422.3	141.2	563.5	10 035.9	5 894.8	15 930.7	5.6	63.0

LABOUR FORCE STATUS (AGED 15 AND OVER), Seasonally adjusted

Month	EMPLOYED			UNEMPLOYED			Labour force	Unemployment rate	Participation rate
	Full time	Part time	Total	Looking for f/t work	Looking for p/t work	Total			
	'000	'000	'000	'000	'000	'000	'000	%	%
MALES									
2002									
June	4 435.5	775.8	5 211.3	303.8	60.4	364.3	5 575.6	6.5	72.3
July	4 431.6	771.6	5 203.2	292.4	55.0	347.4	5 550.7	6.3	71.9
August	4 440.4	775.5	5 215.8	283.7	67.8	351.4	5 567.3	6.3	72.0
September	4 445.8	769.5	5 215.2	284.1	62.6	346.7	5 561.9	6.2	71.9
October	4 428.0	784.8	5 212.8	277.1	60.9	338.0	5 550.8	6.1	71.6
November	4 455.5	788.6	5 244.2	278.7	63.4	342.1	5 586.3	6.1	72.0
December	4 472.7	784.6	5 257.3	284.8	64.0	348.8	5 606.2	6.2	72.2
2003									
January	4 523.2	772.3	5 295.5	286.9	64.6	351.5	5 646.9	6.2	72.6
February	4 519.9	765.5	5 285.4	282.1	62.1	344.2	5 629.7	6.1	72.3
March	4 515.6	781.7	5 297.3	288.0	53.1	341.1	5 638.4	6.0	72.3
April	4 487.7	776.0	5 263.7	292.6	64.6	357.2	5 621.0	6.4	71.9
May	4 510.7	767.2	5 277.9	287.7	58.4	346.1	5 624.0	6.2	71.9
June	4 492.7	771.7	5 264.4	288.3	62.0	350.3	5 614.7	6.2	71.7
July	4 488.4	780.9	5 269.4	280.5	60.9	341.3	5 610.7	6.1	71.5
August	4 537.0	769.5	5 306.5	266.2	52.4	318.6	5 625.1	5.7	71.6
FEMALES									
2002									
June	2 224.1	1 887.8	4 111.8	187.5	91.1	278.6	4 390.4	6.3	55.4
July	2 225.7	1 865.0	4 090.7	168.7	97.9	266.6	4 357.4	6.1	55.0
August	2 285.3	1 869.8	4 155.1	174.6	94.1	268.7	4 423.8	6.1	55.7
September	2 272.9	1 862.6	4 135.6	171.2	101.7	272.9	4 408.5	6.2	55.5
October	2 258.6	1 898.5	4 157.1	157.5	101.4	258.9	4 415.9	5.9	55.5
November	2 280.3	1 905.3	4 185.6	176.3	95.7	272.0	4 457.6	6.1	55.9
December	2 307.1	1 917.4	4 224.5	170.8	99.6	270.4	4 494.8	6.0	56.3
2003									
January	2 318.9	1 961.4	4 280.3	179.9	88.3	268.2	4 548.6	5.9	56.9
February	2 332.2	1 945.9	4 278.1	176.1	89.4	265.5	4 543.6	5.8	56.8
March	2 271.8	1 951.6	4 223.4	193.5	91.1	284.6	4 508.0	6.3	56.2
April	2 287.7	1 955.0	4 242.7	175.4	90.1	265.5	4 508.2	5.9	56.2
May	2 301.9	1 955.6	4 257.5	175.3	91.2	266.5	4 523.9	5.9	56.3
June	2 265.9	1 977.2	4 243.1	184.7	85.0	269.7	4 512.8	6.0	56.1
July	2 269.5	1 913.4	4 182.9	185.5	100.1	285.6	4 468.5	6.4	55.4
August	2 284.5	1 942.0	4 226.4	173.2	95.0	268.2	4 494.7	6.0	55.7
PERSONS									
2002									
June	6 659.5	2 663.6	9 323.1	491.3	151.5	642.8	9 966.0	6.5	63.8
July	6 657.3	2 636.6	9 293.9	461.2	152.9	614.1	9 908.0	6.2	63.3
August	6 725.6	2 645.3	9 370.9	458.3	161.9	620.2	9 991.1	6.2	63.8
September	6 718.7	2 632.1	9 350.8	455.3	164.2	619.6	9 970.4	6.2	63.6
October	6 686.6	2 683.3	9 369.8	434.5	162.3	596.9	9 966.7	6.0	63.5
November	6 735.9	2 693.9	9 429.8	455.0	159.1	614.1	10 043.9	6.1	63.9
December	6 779.8	2 702.0	9 481.8	455.6	163.6	619.2	10 101.0	6.1	64.1
2003									
January	6 842.1	2 733.7	9 575.8	466.8	152.9	619.7	10 195.5	6.1	64.7
February	6 852.1	2 711.4	9 563.5	458.2	151.6	609.7	10 173.3	6.0	64.4
March	6 787.4	2 733.3	9 520.7	481.5	144.2	625.6	10 146.3	6.2	64.1
April	6 775.4	2 731.0	9 506.4	468.0	154.7	622.7	10 129.1	6.1	64.0
May	6 812.6	2 722.8	9 535.4	463.0	149.6	612.5	10 147.9	6.0	64.0
June	6 758.6	2 748.9	9 507.5	473.0	147.0	620.0	10 127.5	6.1	63.8
July	6 757.9	2 694.4	9 452.3	465.9	161.0	626.9	10 079.2	6.2	63.4
August	6 821.4	2 711.5	9 532.9	439.4	147.4	586.9	10 119.8	5.8	63.5

LABOUR FORCE STATUS (AGED 15 AND OVER), Trend(a)

Month	EMPLOYED			UNEMPLOYED			Labour force	Unemployment rate	Participation rate
	Full time	Part time	Total	Looking for f/t work	Looking for p/t work	Total			
	'000	'000	'000	'000	'000	'000	'000	%	%
MALES									
2002									
June	4 441.4	762.0	5 203.4	297.8	61.7	359.4	5 562.8	6.5	72.2
July	4 438.4	768.0	5 206.4	292.1	61.5	353.6	5 559.9	6.4	72.0
August	4 436.3	774.3	5 210.6	287.1	61.7	348.8	5 559.4	6.3	71.9
September	4 438.4	779.3	5 217.7	283.2	62.4	345.6	5 563.3	6.2	71.9
October	4 447.8	781.6	5 229.4	280.8	63.1	343.9	5 573.3	6.2	71.9
November	4 463.4	781.5	5 245.0	280.5	63.4	343.9	5 588.8	6.2	72.0
December	4 481.7	780.1	5 261.8	281.8	63.0	344.8	5 606.6	6.2	72.2
2003									
January	4 497.6	778.1	5 275.7	284.2	62.1	346.2	5 622.0	6.2	72.3
February	4 507.3	775.6	5 282.9	286.7	61.3	348.0	5 631.0	6.2	72.3
March	4 509.6	773.7	5 283.3	288.4	60.8	349.2	5 632.5	6.2	72.2
April	4 506.5	773.1	5 279.6	288.4	60.3	348.7	5 628.3	6.2	72.0
May	4 503.2	773.3	5 276.5	286.7	59.8	346.5	5 623.0	6.2	71.9
June	4 502.7	773.5	5 276.2	283.9	59.2	343.2	5 619.3	6.1	71.7
July	4 504.2	773.6	5 277.8	280.4	58.4	338.8	5 616.7	6.0	71.6
August	4 508.1	773.5	5 281.6	276.8	57.7	334.5	5 616.1	6.0	71.5
FEMALES									
2002									
June	2 238.0	1 867.4	4 105.4	171.5	91.8	263.3	4 368.7	6.0	55.2
July	2 244.9	1 868.6	4 113.5	171.3	95.0	266.2	4 379.7	6.1	55.2
August	2 254.1	1 872.2	4 126.3	170.9	97.7	268.6	4 394.9	6.1	55.4
September	2 266.0	1 879.8	4 145.9	169.9	99.1	268.9	4 414.8	6.1	55.5
October	2 279.4	1 892.0	4 171.4	169.5	98.9	268.4	4 439.8	6.0	55.8
November	2 291.4	1 907.8	4 199.2	170.8	97.5	268.3	4 467.5	6.0	56.1
December	2 300.7	1 924.1	4 224.8	173.6	95.4	269.0	4 493.8	6.0	56.3
2003									
January	2 305.8	1 939.3	4 245.1	177.0	93.0	269.9	4 515.0	6.0	56.5
February	2 306.0	1 950.3	4 256.3	179.7	90.8	270.5	4 526.8	6.0	56.6
March	2 301.2	1 955.7	4 256.9	181.3	89.7	271.0	4 527.9	6.0	56.5
April	2 292.5	1 956.2	4 248.7	181.5	89.9	271.4	4 520.1	6.0	56.3
May	2 284.5	1 953.7	4 238.2	181.2	90.7	271.9	4 510.1	6.0	56.1
June	2 279.1	1 949.8	4 228.8	180.6	92.0	272.6	4 501.5	6.1	55.9
July	2 275.3	1 945.0	4 220.4	179.9	93.4	273.3	4 493.7	6.1	55.8
August	2 273.1	1 941.4	4 214.5	179.2	94.6	273.8	4 488.3	6.1	55.6
PERSONS									
2002									
June	6 679.4	2 629.3	9 308.7	469.3	153.5	622.7	9 931.5	6.3	63.6
July	6 683.3	2 636.6	9 319.9	463.4	156.4	619.8	9 939.7	6.2	63.5
August	6 690.4	2 646.4	9 336.8	458.0	159.5	617.5	9 954.3	6.2	63.5
September	6 704.4	2 659.1	9 363.5	453.1	161.5	614.5	9 978.1	6.2	63.6
October	6 727.3	2 673.6	9 400.8	450.3	162.0	612.3	10 013.2	6.1	63.7
November	6 754.8	2 689.3	9 444.2	451.3	160.9	612.1	10 056.3	6.1	63.9
December	6 782.4	2 704.2	9 486.6	455.4	158.4	613.8	10 100.5	6.1	64.1
2003									
January	6 803.4	2 717.4	9 520.8	461.1	155.0	616.2	10 137.0	6.1	64.3
February	6 813.3	2 725.9	9 539.3	466.4	152.1	618.5	10 157.8	6.1	64.3
March	6 810.7	2 729.4	9 540.2	469.7	150.5	620.2	10 160.4	6.1	64.2
April	6 799.1	2 729.3	9 528.3	470.0	150.1	620.1	10 148.4	6.1	64.1
May	6 787.7	2 727.0	9 514.7	467.9	150.5	618.5	10 133.2	6.1	63.9
June	6 781.7	2 723.3	9 505.0	464.6	151.2	615.8	10 120.8	6.1	63.7
July	6 779.6	2 718.6	9 498.2	460.3	151.9	612.1	10 110.3	6.1	63.6
August	6 781.2	2 714.9	9 496.1	456.0	152.3	608.3	10 104.4	6.0	63.5

(a) Trend estimates for February 2003 to July 2003 have been revised.

UNEMPLOYED PERSONS, Original

Month	NUMBER OF UNEMPLOYED PERSONS					UNEMPLOYMENT RATE					UNEMPLOYMENT TO POPULATION RATIO	
	Aged 15-19 looking for f/t work	Aged 20 and over looking for f/t work	Total looking for f/t work	Looking for p/t work	Total	Aged 15-19 looking for f/t work	Aged 20 and over looking for f/t work	Total looking for f/t work	Looking for p/t work	Total	Aged 15-19 looking for f/t work	Aged 20 and over looking for f/t work
	'000	'000	'000	'000	'000	%	%	%	%	%	%	%
MALES												
2002												
June	33.1	264.4	297.5	55.0	352.4	18.9	5.8	6.3	6.4	6.3	4.7	3.8
July	31.1	242.3	273.4	47.5	320.9	17.1	5.3	5.8	5.8	5.8	4.5	3.5
August	30.7	245.7	276.4	64.8	341.3	18.7	5.5	5.9	7.6	6.2	4.4	3.5
September	29.8	257.5	287.3	68.2	355.5	17.8	5.6	6.0	8.2	6.3	4.3	3.7
October	33.7	231.5	265.2	56.3	321.4	19.7	5.1	5.6	6.6	5.8	4.8	3.3
November	34.6	235.4	270.0	56.1	326.1	20.9	5.2	5.7	6.7	5.9	4.9	3.3
December	44.7	241.0	285.8	67.9	353.7	21.7	5.2	5.9	8.1	6.2	6.4	3.4
2003												
January	50.5	266.1	316.7	63.9	380.6	24.5	5.8	6.6	8.0	6.8	7.2	3.8
February	41.7	267.6	309.3	67.1	376.4	21.4	5.8	6.4	8.3	6.7	5.9	3.8
March	41.5	248.1	289.6	60.1	349.8	22.2	5.4	6.1	7.1	6.2	5.9	3.5
April	35.3	252.9	288.2	69.4	357.6	19.6	5.5	6.1	8.0	6.4	5.0	3.6
May	35.2	248.5	283.7	60.3	344.0	19.9	5.4	5.9	7.2	6.1	5.0	3.5
June	32.6	249.6	282.2	56.5	338.7	19.2	5.4	5.9	6.6	6.0	4.7	3.5
July	29.9	231.9	261.9	52.8	314.6	16.9	5.1	5.5	6.3	5.6	4.3	3.2
August	31.8	227.1	258.9	50.3	309.2	19.1	5.0	5.5	6.1	5.5	4.5	3.2
FEMALES												
2002												
June	30.5	150.9	181.5	90.5	272.0	29.3	6.6	7.6	4.5	6.2	4.6	2.1
July	22.0	128.8	150.8	86.1	236.9	21.0	5.6	6.3	4.4	5.4	3.3	1.8
August	24.1	140.6	164.7	90.1	254.8	24.8	6.1	6.8	4.6	5.8	3.6	1.9
September	24.4	143.1	167.4	105.5	273.0	24.7	6.0	6.8	5.3	6.1	3.6	2.0
October	23.9	127.0	150.9	97.5	248.4	23.8	5.5	6.3	4.9	5.6	3.6	1.7
November	25.7	141.1	166.8	83.7	250.5	24.6	6.0	6.8	4.2	5.6	3.8	1.9
December	28.1	146.9	175.0	95.5	270.5	23.3	6.1	6.9	4.8	6.0	4.2	2.0
2003												
January	35.9	155.3	191.3	80.9	272.2	27.5	6.5	7.6	4.2	6.1	5.4	2.1
February	32.7	166.8	199.4	103.9	303.3	27.3	6.9	7.9	5.2	6.7	4.9	2.3
March	31.3	168.8	200.1	106.9	307.0	28.1	7.2	8.1	5.2	6.8	4.7	2.3
April	26.5	150.4	176.9	95.3	272.2	25.9	6.4	7.3	4.6	6.0	3.9	2.0
May	25.8	157.0	182.8	94.1	276.9	24.2	6.7	7.4	4.6	6.1	3.8	2.1
June	26.0	153.1	179.1	84.6	263.6	24.5	6.6	7.4	4.0	5.8	3.9	2.1
July	19.8	145.7	165.4	87.9	253.4	17.6	6.2	6.7	4.4	5.7	2.9	2.0
August	25.2	138.2	163.4	90.9	254.3	24.9	6.0	6.8	4.4	5.7	3.7	1.9
PERSONS												
2002												
June	63.6	415.3	478.9	145.5	624.4	22.8	6.1	6.8	5.1	6.3	4.7	2.9
July	53.1	371.1	424.2	133.6	557.8	18.6	5.4	6.0	4.8	5.6	3.9	2.6
August	54.8	386.4	441.1	154.9	596.1	20.9	5.7	6.2	5.5	6.0	4.0	2.7
September	54.2	400.6	454.7	173.7	628.5	20.3	5.7	6.3	6.1	6.2	4.0	2.8
October	57.6	358.5	416.1	153.8	569.9	21.2	5.2	5.9	5.4	5.7	4.2	2.5
November	60.3	376.5	436.8	139.8	576.6	22.3	5.5	6.1	4.9	5.8	4.4	2.6
December	72.8	387.9	460.7	163.4	624.1	22.3	5.5	6.2	5.7	6.1	5.3	2.7
2003												
January	86.5	421.4	507.9	144.8	652.7	25.6	6.0	6.9	5.3	6.5	6.3	2.9
February	74.4	434.4	508.7	170.9	679.7	23.7	6.1	6.9	6.1	6.7	5.4	3.0
March	72.9	416.9	489.8	167.0	656.8	24.4	6.0	6.8	5.8	6.5	5.3	2.9
April	61.8	403.3	465.1	164.7	629.7	21.9	5.8	6.5	5.6	6.2	4.5	2.8
May	61.0	405.5	466.5	154.4	620.9	21.5	5.8	6.5	5.3	6.1	4.4	2.8
June	58.6	402.7	461.3	141.0	602.4	21.2	5.8	6.4	4.8	5.9	4.3	2.8
July	49.7	377.6	427.3	140.7	568.0	17.2	5.4	5.9	4.9	5.6	3.6	2.6
August	57.0	365.3	422.3	141.2	563.5	21.3	5.3	5.9	4.9	5.6	4.1	2.5

UNEMPLOYED PERSONS, Seasonally adjusted

Month	NUMBER OF UNEMPLOYED PERSONS					UNEMPLOYMENT RATE					UNEMPLOYMENT TO POPULATION RATIO	
	Aged 15-19 looking for f/t work	Aged 20 and over looking for f/t work	Total looking for f/t work	Looking for p/t work	Total	Aged 15-19 looking for f/t work	Aged 20 and over looking for f/t work	Total looking for f/t work	Looking for p/t work	Total	Aged 15-19 looking for f/t work	Aged 20 and over looking for f/t work
	'000	'000	'000	'000	'000	%	%	%	%	%	%	%
MALES												
2002												
June	35.2	268.6	303.8	60.4	364.3	19.6	5.9	6.4	7.2	6.5	5.0	3.8
July	35.0	257.4	292.4	55.0	347.4	19.7	5.7	6.2	6.7	6.3	5.0	3.7
August	35.7	247.9	283.7	67.8	351.4	20.2	5.5	6.0	8.0	6.3	5.1	3.5
September	33.3	250.8	284.1	62.6	346.7	19.1	5.5	6.0	7.5	6.2	4.8	3.6
October	36.8	240.3	277.1	60.9	338.0	20.6	5.3	5.9	7.2	6.1	5.3	3.4
November	36.3	242.4	278.7	63.4	342.1	20.6	5.3	5.9	7.4	6.1	5.2	3.4
December	37.5	247.3	284.8	64.0	348.8	20.6	5.4	6.0	7.5	6.2	5.4	3.5
2003												
January	39.5	247.4	286.9	64.6	351.5	21.2	5.4	6.0	7.7	6.2	5.6	3.5
February	36.1	246.0	282.1	62.1	344.2	19.5	5.3	5.9	7.5	6.1	5.2	3.5
March	41.3	246.7	288.0	53.1	341.1	21.7	5.3	6.0	6.4	6.0	5.9	3.5
April	35.9	256.7	292.6	64.6	357.2	19.7	5.6	6.1	7.7	6.4	5.1	3.6
May	37.8	249.9	287.7	58.4	346.1	20.4	5.4	6.0	7.1	6.2	5.4	3.5
June	34.8	253.6	288.3	62.0	350.3	19.9	5.5	6.0	7.4	6.2	5.0	3.6
July	33.7	246.7	280.5	60.9	341.3	19.4	5.4	5.9	7.2	6.1	4.8	3.5
August	37.1	229.1	266.2	52.4	318.6	20.7	5.0	5.5	6.4	5.7	5.3	3.2
FEMALES												
2002												
June	32.9	154.6	187.5	91.1	278.6	29.5	6.7	7.8	4.6	6.3	4.9	2.1
July	24.0	144.8	168.7	97.9	266.6	23.2	6.3	7.0	5.0	6.1	3.6	2.0
August	27.6	147.0	174.6	94.1	268.7	25.6	6.2	7.1	4.8	6.1	4.1	2.0
September	27.2	144.0	171.2	101.7	272.9	25.7	6.2	7.0	5.2	6.2	4.1	2.0
October	26.5	130.9	157.5	101.4	258.9	25.2	5.7	6.5	5.1	5.9	4.0	1.8
November	27.5	148.9	176.3	95.7	272.0	25.4	6.3	7.2	4.8	6.1	4.1	2.0
December	22.8	147.9	170.8	99.6	270.4	21.8	6.2	6.9	4.9	6.0	3.4	2.0
2003												
January	29.7	150.2	179.9	88.3	268.2	26.9	6.3	7.2	4.3	5.9	4.4	2.1
February	29.5	146.6	176.1	89.4	265.5	26.7	6.1	7.0	4.4	5.8	4.4	2.0
March	31.2	162.3	193.5	91.1	284.6	26.8	6.9	7.8	4.5	6.3	4.6	2.2
April	27.6	147.7	175.4	90.1	265.5	26.0	6.3	7.1	4.4	5.9	4.1	2.0
May	24.8	150.4	175.3	91.2	266.5	22.5	6.4	7.1	4.5	5.9	3.7	2.0
June	27.9	156.8	184.7	85.0	269.7	24.7	6.7	7.5	4.1	6.0	4.1	2.1
July	21.5	164.0	185.5	100.1	285.6	19.4	7.0	7.6	5.0	6.4	3.2	2.2
August	28.9	144.3	173.2	95.0	268.2	25.8	6.2	7.0	4.7	6.0	4.3	2.0
PERSONS												
2002												
June	68.1	423.2	491.3	151.5	642.8	23.4	6.2	6.9	5.4	6.5	5.0	3.0
July	59.0	402.2	461.2	152.9	614.1	21.0	5.9	6.5	5.5	6.2	4.3	2.8
August	63.3	394.9	458.3	161.9	620.2	22.3	5.7	6.4	5.8	6.2	4.6	2.8
September	60.5	394.8	455.3	164.2	619.6	21.6	5.7	6.3	5.9	6.2	4.4	2.8
October	63.3	371.2	434.5	162.3	596.9	22.3	5.4	6.1	5.7	6.0	4.6	2.6
November	63.8	391.2	455.0	159.1	614.1	22.4	5.7	6.3	5.6	6.1	4.7	2.7
December	60.3	395.2	455.6	163.6	619.2	21.0	5.7	6.3	5.7	6.1	4.4	2.7
2003												
January	69.2	397.6	466.8	152.9	619.7	23.3	5.7	6.4	5.3	6.1	5.0	2.8
February	65.7	392.5	458.2	151.6	609.7	22.2	5.6	6.3	5.3	6.0	4.8	2.7
March	72.5	409.0	481.5	144.2	625.6	23.6	5.9	6.6	5.0	6.2	5.3	2.8
April	63.5	404.4	468.0	154.7	622.7	22.0	5.8	6.5	5.4	6.1	4.6	2.8
May	62.6	400.4	463.0	149.6	612.5	21.2	5.7	6.4	5.2	6.0	4.6	2.8
June	62.7	410.3	473.0	147.0	620.0	21.8	5.9	6.5	5.1	6.1	4.6	2.8
July	55.2	410.7	465.9	161.0	626.9	19.4	5.9	6.5	5.6	6.2	4.0	2.8
August	66.0	373.5	439.4	147.4	586.9	22.6	5.4	6.1	5.2	5.8	4.8	2.6

UNEMPLOYED PERSONS, Trend(a)

Month	NUMBER OF UNEMPLOYED PERSONS					UNEMPLOYMENT RATE					UNEMPLOYMENT TO POPULATION RATIO	
	Aged 15-19 looking for f/t work	Aged 20 and over looking for f/t work	Total looking for f/t work	Looking for p/t work	Total	Aged 15-19 looking for f/t work	Aged 20 and over looking for f/t work	Total looking for f/t work	Looking for p/t work	Total	Aged 15-19 looking for f/t work	Aged 20 and over looking for f/t work
	'000	'000	'000	'000	'000	%	%	%	%	%	%	%
MALES												
2002												
June	35.8	261.9	297.8	61.7	359.4	19.9	5.7	6.3	7.5	6.5	5.1	3.7
July	35.1	257.0	292.1	61.5	353.6	19.7	5.6	6.2	7.4	6.4	5.0	3.7
August	34.9	252.2	287.1	61.7	348.8	19.8	5.5	6.1	7.4	6.3	5.0	3.6
September	35.2	248.0	283.2	62.4	345.6	20.0	5.5	6.0	7.4	6.2	5.0	3.5
October	35.8	245.0	280.8	63.1	343.9	20.2	5.4	5.9	7.5	6.2	5.1	3.5
November	36.6	243.8	280.5	63.4	343.9	20.4	5.3	5.9	7.5	6.2	5.2	3.5
December	37.5	244.3	281.8	63.0	344.8	20.6	5.3	5.9	7.5	6.2	5.4	3.5
2003												
January	38.2	246.0	284.2	62.1	346.2	20.7	5.4	5.9	7.4	6.2	5.4	3.5
February	38.4	248.4	286.7	61.3	348.0	20.6	5.4	6.0	7.3	6.2	5.5	3.5
March	38.1	250.4	288.4	60.8	349.2	20.5	5.4	6.0	7.3	6.2	5.4	3.5
April	37.4	251.0	288.4	60.3	348.7	20.3	5.4	6.0	7.2	6.2	5.3	3.5
May	36.6	250.1	286.7	59.8	346.5	20.2	5.4	6.0	7.2	6.2	5.2	3.5
June	36.0	247.9	283.9	59.2	343.2	20.1	5.4	5.9	7.1	6.1	5.1	3.5
July	35.5	244.9	280.4	58.4	338.8	20.0	5.3	5.9	7.0	6.0	5.1	3.4
August	35.2	241.6	276.8	57.7	334.5	20.1	5.2	5.8	6.9	6.0	5.0	3.4
FEMALES												
2002												
June	28.1	143.4	171.5	91.8	263.3	26.4	6.2	7.1	4.7	6.0	4.2	2.0
July	27.7	143.6	171.3	95.0	266.2	26.0	6.2	7.1	4.8	6.1	4.1	2.0
August	27.2	143.7	170.9	97.7	268.6	25.5	6.2	7.0	5.0	6.1	4.1	2.0
September	26.6	143.3	169.9	99.1	268.9	25.1	6.1	7.0	5.0	6.1	4.0	2.0
October	26.3	143.2	169.5	98.9	268.4	24.8	6.1	6.9	5.0	6.0	3.9	2.0
November	26.6	144.2	170.8	97.5	268.3	24.9	6.1	6.9	4.9	6.0	4.0	2.0
December	27.3	146.3	173.6	95.4	269.0	25.3	6.2	7.0	4.7	6.0	4.1	2.0
2003												
January	28.1	148.8	177.0	93.0	269.9	25.7	6.3	7.1	4.6	6.0	4.2	2.0
February	28.6	151.1	179.7	90.8	270.5	25.9	6.4	7.2	4.5	6.0	4.3	2.1
March	28.5	152.8	181.3	89.7	271.0	25.7	6.4	7.3	4.4	6.0	4.2	2.1
April	27.9	153.6	181.5	89.9	271.4	25.1	6.5	7.3	4.4	6.0	4.2	2.1
May	27.0	154.2	181.2	90.7	271.9	24.3	6.5	7.3	4.4	6.0	4.0	2.1
June	26.2	154.4	180.6	92.0	272.6	23.6	6.6	7.3	4.5	6.1	3.9	2.1
July	25.6	154.3	179.9	93.4	273.3	23.0	6.6	7.3	4.6	6.1	3.8	2.1
August	25.3	153.8	179.2	94.6	273.8	22.7	6.6	7.3	4.6	6.1	3.8	2.1

(a) Trend estimates for February 2003 to July 2003 have been revised.

UNEMPLOYED PERSONS, Trend(a) *continued*

Month	NUMBER OF UNEMPLOYED PERSONS					UNEMPLOYMENT RATE					UNEMPLOYMENT TO POPULATION RATIO	
	Aged 15-19 looking for f/t work	Aged 20 and over looking for f/t work	Total looking for f/t work	Looking for p/t work	Total	Aged 15-19 looking for f/t work	Aged 20 and over looking for f/t work	Total looking for f/t work	Looking for p/t work	Total	Aged 15-19 looking for f/t work	Aged 20 and over looking for f/t work
	'000	'000	'000	'000	'000	%	%	%	%	%	%	%
PERSONS												
2002												
June	63.9	405.3	469.3	153.5	622.7	22.3	5.9	6.6	5.5	6.3	4.7	2.8
July	62.8	400.6	463.4	156.4	619.8	22.1	5.8	6.5	5.6	6.2	4.6	2.8
August	62.1	395.9	458.0	159.5	617.5	21.9	5.8	6.4	5.7	6.2	4.5	2.8
September	61.8	391.3	453.1	161.5	614.5	21.9	5.7	6.3	5.7	6.2	4.5	2.7
October	62.1	388.2	450.3	162.0	612.3	21.9	5.6	6.3	5.7	6.1	4.5	2.7
November	63.2	388.0	451.3	160.9	612.1	22.1	5.6	6.3	5.6	6.1	4.6	2.7
December	64.8	390.7	455.4	158.4	613.8	22.3	5.6	6.3	5.5	6.1	4.7	2.7
2003												
January	66.3	394.8	461.1	155.0	616.2	22.6	5.7	6.3	5.4	6.1	4.8	2.7
February	66.9	399.5	466.4	152.1	618.5	22.6	5.7	6.4	5.3	6.1	4.9	2.8
March	66.6	403.2	469.7	150.5	620.2	22.4	5.8	6.5	5.2	6.1	4.8	2.8
April	65.3	404.6	470.0	150.1	620.1	22.1	5.8	6.5	5.2	6.1	4.8	2.8
May	63.7	404.3	467.9	150.5	618.5	21.7	5.8	6.4	5.2	6.1	4.6	2.8
June	62.2	402.3	464.6	151.2	615.8	21.4	5.8	6.4	5.3	6.1	4.5	2.8
July	61.1	399.2	460.3	151.9	612.1	21.2	5.7	6.4	5.3	6.1	4.4	2.7
August	60.6	395.4	456.0	152.3	608.3	21.1	5.7	6.3	5.3	6.0	4.4	2.7

(a) Trend estimates for February 2003 to July 2003 have been revised.

	EMPLOYED			UNEMPLOYED			Labour force	Not in labour force	Civilian population aged 15-19	Unemployment rate	Participation rate
	Full time	Part time	Total	Looking for f/t work	Looking for p/t work	Total					
	'000	'000	'000	'000	'000	'000	'000	'000	'000	%	%
ATTENDING NEITHER SCHOOL NOR A TERTIARY EDUCATIONAL INSTITUTION FULL TIME											
Males	132.2	39.2	171.4	28.6	*2.3	30.9	202.3	25.6	227.9	15.3	88.8
Females	74.2	49.5	123.8	21.4	*2.3	23.7	147.4	25.9	173.3	16.1	85.1
Persons	206.4	88.7	295.1	50.0	4.6	54.6	349.7	51.5	401.2	15.6	87.2
ATTENDING A TERTIARY EDUCATIONAL INSTITUTION FULL TIME											
Males	*2.1	48.0	50.1	*1.3	7.2	8.4	58.6	44.1	102.6	14.4	57.1
Females	*1.3	66.0	67.3	*2.7	9.6	12.3	79.5	42.9	122.4	15.4	65.0
Persons	*3.4	114.0	117.4	*3.9	16.8	20.7	138.1	86.9	225.0	15.0	61.4
ATTENDING SCHOOL											
Males	*0.6	104.1	104.7	*2.0	19.5	21.4	126.1	245.7	371.8	17.0	33.9
Females	*0.3	140.4	140.7	*1.2	19.0	20.1	160.9	216.6	377.4	12.5	42.6
Persons	*0.9	244.5	245.4	*3.1	38.4	41.6	287.0	462.3	749.2	14.5	38.3
TOTAL											
Males	134.9	191.3	326.2	31.8	29.0	60.8	387.0	315.4	702.3	15.7	55.1
Females	75.8	255.9	331.7	25.2	30.9	56.1	387.8	285.3	673.1	14.5	57.6
Persons	210.7	447.2	657.9	57.0	59.8	116.9	774.8	600.7	1 375.5	15.1	56.3

* estimate is subject to sampling variability too high for most practical purposes

	EMPLOYED			UNEMPLOYED			Labour force	Not in labour force	Civilian population aged 15 and over	Unemployment rate	Participation rate
	Full time	Part time	Total	Looking for f/t work	Looking for p/t work	Total					
	'000	'000	'000	'000	'000	'000	'000	'000	'000	%	%
MALES											
New South Wales	1 511.0	244.0	1 755.1	79.5	14.0	93.5	1 848.6	784.5	2 633.1	5.1	70.2
Victoria	1 120.5	202.9	1 323.4	61.1	13.4	74.5	1 398.0	572.7	1 970.6	5.3	70.9
Queensland	844.7	148.7	993.4	57.3	9.9	67.2	1 060.6	424.0	1 484.6	6.3	71.4
South Australia	335.4	60.0	395.4	19.8	4.0	23.8	419.2	185.0	604.3	5.7	69.4
Western Australia	466.5	81.9	548.4	27.5	5.8	33.3	581.7	202.2	783.9	5.7	74.2
Tasmania	95.0	16.5	111.6	8.8	1.6	10.4	121.9	62.0	183.9	8.5	66.3
Northern Territory	43.6	10.0	53.6	1.8	*0.4	2.2	55.9	18.0	73.9	4.0	75.6
Australian Capital Territory	74.0	16.2	90.2	3.1	1.2	4.2	94.4	28.2	122.6	4.5	77.0
Australia	4 490.8	780.3	5 271.0	258.9	50.3	309.2	5 580.3	2 276.6	7 856.9	5.5	71.0
FEMALES											
New South Wales	770.7	615.2	1 385.9	51.8	28.5	80.3	1 466.2	1 238.0	2 704.2	5.5	54.2
Victoria	549.3	497.7	1 047.0	36.8	23.8	60.6	1 107.6	932.5	2 040.1	5.5	54.3
Queensland	430.6	385.0	815.7	36.9	17.5	54.3	870.0	653.9	1 523.9	6.2	57.1
South Australia	160.7	157.4	318.0	13.3	6.9	20.3	338.3	290.2	628.4	6.0	53.8
Western Australia	212.0	208.3	420.3	15.9	10.5	26.3	446.6	338.8	785.4	5.9	56.9
Tasmania	46.6	47.3	93.8	4.7	1.5	6.2	100.0	95.2	195.2	6.2	51.2
Northern Territory	27.1	12.6	39.7	1.8	*0.8	2.5	42.2	26.1	68.3	6.0	61.8
Australian Capital Territory	50.2	30.8	81.0	2.3	1.5	3.8	84.7	43.5	128.3	4.4	66.1
Australia	2 247.2	1 954.2	4 201.4	163.4	90.9	254.3	4 455.6	3 618.2	8 073.8	5.7	55.2
PERSONS											
New South Wales	2 281.8	859.2	3 141.0	131.3	42.5	173.8	3 314.8	2 022.5	5 337.3	5.2	62.1
Victoria	1 669.8	700.6	2 370.4	97.9	37.3	135.1	2 505.5	1 505.2	4 010.7	5.4	62.5
Queensland	1 275.3	533.7	1 809.1	94.2	27.4	121.5	1 930.6	1 077.9	3 008.5	6.3	64.2
South Australia	496.1	217.3	713.4	33.2	10.9	44.1	757.5	475.2	1 232.7	5.8	61.5
Western Australia	678.6	290.1	968.7	43.4	16.2	59.6	1 028.3	541.0	1 569.3	5.8	65.5
Tasmania	141.6	63.8	205.4	13.4	3.1	16.5	221.9	157.2	379.1	7.5	58.5
Northern Territory	70.7	22.6	93.3	3.6	1.2	4.8	98.1	44.1	142.2	4.9	69.0
Australian Capital Territory	124.2	47.0	171.2	5.3	2.7	8.0	179.2	71.7	250.9	4.5	71.4
Australia	6 738.0	2 734.4	9 472.4	422.3	141.2	563.5	10 035.9	5 894.8	15 930.7	5.6	63.0

* estimate is subject to sampling variability too high for most practical purposes

Month	NUMBER OF UNEMPLOYED PERSONS					UNEMPLOYMENT RATE					UNEMPLOYMENT TO POPULATION RATIO	
	Aged 15-19 looking for f/t work	Aged 20 and over looking for f/t work	Total looking for f/t work	Looking for p/t work	Total	Aged 15-19 looking for f/t work	Aged 20 and over looking for f/t work	Total looking for f/t work	Looking for p/t work	Total	Aged 15-19 looking for f/t work	Aged 20 and over looking for f/t work
	'000	'000	'000	'000	'000	%	%	%	%	%	%	%
NEW SOUTH WALES												
2002												
June	21.6	130.9	152.5	45.9	198.4	25.0	5.7	6.4	5.0	6.0	4.8	2.7
July	16.2	119.7	135.8	45.8	181.6	18.7	5.1	5.6	5.2	5.5	3.6	2.5
August	15.2	118.8	134.0	40.9	174.9	19.1	5.1	5.6	4.7	5.4	3.4	2.5
September	15.9	130.7	146.6	52.9	199.5	18.8	5.5	6.0	6.0	6.0	3.5	2.7
October	19.7	107.1	126.8	44.2	171.0	23.9	4.7	5.3	4.9	5.2	4.4	2.2
November	19.1	128.5	147.6	44.2	191.8	22.6	5.5	6.1	4.9	5.8	4.2	2.7
December	24.0	133.3	157.3	46.3	203.6	23.1	5.6	6.3	5.2	6.0	5.3	2.8
2003												
January	28.1	136.5	164.6	45.4	210.0	25.9	5.8	6.7	5.2	6.3	6.2	2.8
February	21.6	152.7	174.2	52.7	226.9	21.1	6.4	7.0	5.9	6.7	4.8	3.1
March	21.0	141.0	162.0	46.9	208.9	21.7	6.0	6.6	5.2	6.2	4.6	2.9
April	19.5	132.4	151.8	49.1	200.9	21.0	5.7	6.3	5.2	6.0	4.3	2.7
May	18.8	140.7	159.5	42.7	202.1	19.8	6.0	6.6	4.6	6.0	4.2	2.9
June	17.7	132.0	149.8	45.7	195.4	20.0	5.7	6.2	4.9	5.8	3.9	2.7
July	14.7	127.0	141.8	46.1	187.9	16.2	5.4	5.8	5.1	5.6	3.3	2.6
August	17.0	114.3	131.3	42.5	173.8	19.5	4.9	5.4	4.7	5.2	3.8	2.3
VICTORIA												
2002												
June	11.1	106.9	118.0	32.1	150.1	19.3	6.2	6.6	4.5	6.0	3.3	3.0
July	9.5	83.3	92.8	31.3	124.1	15.8	4.8	5.2	4.5	5.0	2.9	2.3
August	10.8	96.8	107.5	40.3	147.8	19.7	5.6	6.0	5.6	5.9	3.2	2.7
September	9.8	96.3	106.1	45.4	151.5	17.9	5.5	5.8	6.3	6.0	2.9	2.7
October	11.6	87.3	98.9	39.7	138.7	19.4	5.1	5.6	5.5	5.5	3.5	2.4
November	14.1	88.0	102.1	31.3	133.4	23.3	5.1	5.7	4.4	5.3	4.2	2.4
December	15.0	92.5	107.5	38.1	145.7	21.4	5.2	5.8	5.3	5.6	4.5	2.5
2003												
January	15.3	101.9	117.2	29.7	146.9	23.5	5.7	6.4	4.3	5.8	4.6	2.8
February	10.9	95.9	106.8	39.1	145.9	18.1	5.4	5.8	5.5	5.7	3.2	2.6
March	13.4	95.5	109.0	40.0	149.0	22.6	5.5	6.0	5.4	5.8	4.0	2.6
April	11.5	93.8	105.3	44.8	150.1	22.2	5.4	5.8	6.1	5.9	3.4	2.6
May	10.0	97.4	107.4	42.1	149.5	19.9	5.6	6.0	5.6	5.9	3.0	2.7
June	10.8	93.8	104.7	38.6	143.2	21.2	5.5	5.9	5.1	5.7	3.2	2.6
July	8.0	88.7	96.7	38.3	135.0	15.2	5.1	5.4	5.2	5.3	2.4	2.4
August	9.0	88.9	97.9	37.3	135.1	18.3	5.2	5.5	5.0	5.4	2.7	2.4
QUEENSLAND												
2002												
June	15.0	88.8	103.8	35.5	139.3	23.4	6.9	7.7	6.5	7.3	5.6	3.4
July	13.3	80.3	93.6	30.2	123.9	19.8	6.3	7.0	5.7	6.6	5.0	3.0
August	13.4	79.4	92.8	36.7	129.5	21.3	6.3	7.0	6.7	6.9	5.0	3.0
September	13.6	78.4	91.9	39.7	131.7	22.7	6.0	6.8	7.1	6.9	5.1	2.9
October	13.7	77.2	90.9	36.5	127.4	21.5	6.0	6.7	6.6	6.7	5.1	2.9
November	11.8	76.6	88.4	34.9	123.3	20.9	5.9	6.6	6.3	6.5	4.4	2.9
December	17.6	77.3	94.9	41.9	136.9	23.4	6.0	6.9	7.4	7.1	6.6	2.9
2003												
January	20.5	85.5	106.0	33.8	139.7	26.2	6.5	7.6	6.4	7.3	7.6	3.2
February	22.0	87.8	109.8	40.8	150.7	30.8	6.7	7.9	7.3	7.7	8.2	3.3
March	20.6	94.9	115.5	41.0	156.5	29.9	7.2	8.4	7.3	8.0	7.7	3.5
April	13.8	90.7	104.5	33.9	138.4	21.6	7.0	7.7	6.0	7.2	5.1	3.3
May	14.1	85.5	99.6	30.5	130.1	21.3	6.5	7.2	5.3	6.7	5.2	3.1
June	13.1	91.4	104.5	25.5	130.1	20.7	7.0	7.7	4.4	6.7	4.9	3.4
July	10.8	80.5	91.3	28.2	119.5	16.4	6.2	6.7	5.0	6.2	4.0	2.9
August	14.4	79.8	94.2	27.4	121.5	24.1	6.1	6.9	4.9	6.3	5.3	2.9

Month	NUMBER OF UNEMPLOYED PERSONS					UNEMPLOYMENT RATE					UNEMPLOYMENT TO POPULATION RATIO	
	Aged 15-19 looking for f/t work	Aged 20 and over looking for f/t work	Total looking for f/t work	Looking for p/t work	Total	Aged 15-19 looking for f/t work	Aged 20 and over looking for f/t work	Total looking for f/t work	Looking for p/t work	Total	Aged 15-19 looking for f/t work	Aged 20 and over looking for f/t work
	'000	'000	'000	'000	'000	%	%	%	%	%	%	%
SOUTH AUSTRALIA												
2002												
June	5.8	32.5	38.3	11.1	49.4	28.3	6.7	7.6	4.7	6.7	5.6	2.9
July	4.3	31.4	35.7	8.7	44.5	20.8	6.4	7.0	3.9	6.1	4.2	2.8
August	4.5	33.0	37.6	11.3	48.9	21.8	6.7	7.3	5.1	6.7	4.4	3.0
September	5.4	32.1	37.5	10.6	48.1	24.0	6.5	7.2	4.6	6.4	5.2	2.9
October	4.4	29.8	34.1	11.0	45.1	19.9	6.1	6.7	4.8	6.1	4.2	2.7
November	4.3	29.5	33.8	9.8	43.7	19.3	6.0	6.6	4.3	5.9	4.1	2.6
December	5.1	25.9	30.9	10.9	41.9	20.4	5.1	5.8	4.9	5.6	4.9	2.3
2003												
January	7.2	31.3	38.5	10.8	49.3	25.9	6.1	7.2	5.1	6.6	7.0	2.8
February	6.1	32.2	38.3	13.0	51.3	24.2	6.2	7.0	6.1	6.8	5.9	2.9
March	5.6	30.2	35.8	10.9	46.6	24.6	5.9	6.7	4.7	6.1	5.4	2.7
April	5.9	28.3	34.3	12.4	46.7	26.0	5.6	6.5	5.4	6.1	5.7	2.5
May	6.9	28.8	35.6	12.2	47.9	30.6	5.6	6.6	5.4	6.3	6.6	2.6
June	5.4	29.5	34.9	11.7	46.6	23.8	5.7	6.5	5.1	6.1	5.2	2.6
July	5.2	26.3	31.5	11.0	42.5	21.1	5.1	5.8	5.0	5.6	5.1	2.3
August	5.8	27.4	33.2	10.9	44.1	26.3	5.4	6.3	4.8	5.8	5.6	2.4
WESTERN AUSTRALIA												
2002												
June	6.8	35.8	42.6	13.9	56.6	18.9	5.4	6.1	4.4	5.6	4.8	2.6
July	6.8	36.6	43.4	11.7	55.1	19.4	5.5	6.2	3.8	5.4	4.8	2.6
August	7.3	36.7	44.0	18.7	62.8	24.8	5.4	6.2	6.0	6.2	5.1	2.6
September	6.2	42.5	48.7	17.0	65.7	20.6	6.2	6.8	5.4	6.3	4.4	3.0
October	4.6	37.4	42.0	15.1	57.1	15.4	5.5	5.9	4.8	5.6	3.2	2.7
November	7.1	36.0	43.1	13.6	56.8	22.5	5.3	6.1	4.3	5.6	5.0	2.6
December	6.3	39.2	45.5	17.6	63.2	17.9	5.6	6.2	5.6	6.0	4.4	2.8
2003												
January	10.6	43.6	54.2	16.3	70.5	26.1	6.2	7.3	5.4	6.7	7.4	3.1
February	8.3	42.1	50.4	16.3	66.7	22.2	6.0	6.8	5.4	6.4	5.8	3.0
March	8.4	32.3	40.7	19.4	60.1	23.7	4.7	5.7	6.2	5.8	5.8	2.3
April	7.6	38.3	45.8	16.6	62.4	22.4	5.5	6.3	5.4	6.0	5.3	2.7
May	7.3	34.5	41.8	16.9	58.7	22.2	4.9	5.7	5.7	5.7	5.1	2.4
June	7.7	35.6	43.2	13.0	56.2	22.4	5.1	5.9	4.2	5.4	5.3	2.5
July	7.5	37.0	44.5	12.9	57.4	19.5	5.4	6.1	4.2	5.6	5.2	2.6
August	7.6	35.7	43.4	16.2	59.6	21.6	5.2	6.0	5.3	5.8	5.3	2.5
TASMANIA												
2002												
June	1.8	12.9	14.7	2.9	17.6	21.3	9.3	10.0	4.2	8.1	5.2	3.8
July	2.1	13.8	15.8	2.9	18.7	24.0	10.0	10.8	4.3	8.7	6.1	4.0
August	1.9	13.7	15.6	3.5	19.0	24.8	9.7	10.4	5.2	8.8	5.5	4.0
September	2.0	13.9	15.9	4.4	20.3	23.2	9.5	10.2	7.0	9.3	6.0	4.1
October	2.2	11.2	13.4	4.2	17.6	30.1	7.8	8.9	6.4	8.2	6.6	3.3
November	2.6	11.5	14.1	2.6	16.6	30.3	7.9	9.2	4.0	7.7	7.6	3.4
December	3.2	13.4	16.6	4.6	21.1	33.5	8.9	10.3	6.9	9.3	9.3	3.9
2003												
January	3.0	13.2	16.2	4.2	20.4	31.1	8.9	10.3	6.6	9.3	8.9	3.9
February	3.9	14.3	18.3	3.7	21.9	39.4	9.6	11.4	6.0	9.9	11.6	4.2
March	2.5	14.4	16.9	3.2	20.1	28.8	9.7	10.8	4.9	9.0	7.4	4.2
April	2.1	11.1	13.2	3.4	16.6	22.5	7.8	8.6	4.9	7.5	6.1	3.3
May	2.4	10.4	12.8	3.8	16.7	29.6	7.1	8.3	5.6	7.5	7.2	3.0
June	2.3	12.3	14.6	2.7	17.3	27.0	8.5	9.5	4.1	7.9	6.8	3.6
July	2.2	10.1	12.3	1.9	14.2	25.9	7.0	8.0	2.9	6.5	6.3	2.9
August	1.8	11.6	13.4	3.1	16.5	23.4	7.9	8.7	4.6	7.5	5.3	3.4

Month	NUMBER OF UNEMPLOYED PERSONS					UNEMPLOYMENT RATE					UNEMPLOYMENT TO POPULATION RATIO	
	Aged 15-19 looking for f/t work	Aged 20 and over looking for f/t work	Total looking for f/t work	Looking for p/t work	Total	Aged 15-19 looking for f/t work	Aged 20 and over looking for f/t work	Total looking for f/t work	Looking for p/t work	Total	Aged 15-19 looking for f/t work	Aged 20 and over looking for f/t work
	'000	'000	'000	'000	'000	%	%	%	%	%	%	%
NORTHERN TERRITORY												
2002												
June	*0.9	3.1	4.0	*0.9	4.8	*29.3	4.1	5.0	*3.2	4.6	*5.9	2.4
July	*0.4	2.4	2.8	1.3	4.1	*12.6	3.1	3.5	5.3	3.9	*2.6	1.9
August	*0.9	2.4	3.4	1.3	4.7	*27.5	3.3	4.4	4.8	4.5	*6.4	1.9
September	*0.6	2.3	2.9	1.3	4.2	*26.1	3.0	3.7	4.8	4.0	*4.2	1.8
October	*0.9	3.5	4.4	1.4	5.8	*36.4	4.5	5.5	5.8	5.6	*6.5	2.7
November	*0.8	1.9	2.7	1.4	4.1	*29.1	2.4	3.3	5.4	3.8	*5.6	1.5
December	1.2	3.2	4.4	2.0	6.4	30.3	4.3	5.5	7.8	6.1	7.9	2.5
2003												
January	*0.5	4.4	4.8	2.3	7.1	*16.9	5.8	6.2	9.7	7.0	*3.3	3.4
February	*0.5	4.4	4.8	1.8	6.7	*15.6	5.9	6.3	6.8	6.4	*3.1	3.4
March	*0.5	3.2	3.7	2.9	6.6	*18.0	4.5	5.0	10.2	6.4	*3.5	2.5
April	*0.6	5.1	5.7	1.8	7.5	*15.7	6.6	7.0	7.0	7.0	*4.1	4.0
May	*0.6	4.3	4.9	2.6	7.5	*14.7	5.8	6.3	10.7	7.4	*4.2	3.4
June	*0.8	3.9	4.6	2.2	6.8	*18.1	5.3	6.0	8.5	6.7	*5.3	3.0
July	*0.2	3.3	3.5	1.0	4.6	*5.7	4.6	4.6	4.5	4.6	*1.5	2.6
August	*0.4	3.2	3.6	1.2	4.8	*13.4	4.4	4.8	4.9	4.9	*2.9	2.5
AUSTRALIAN CAPITAL TERRITORY												
2002												
June	*0.7	4.3	5.0	3.2	8.2	*18.2	3.4	3.9	6.3	4.6	*2.9	1.9
July	*0.4	3.7	4.1	1.6	5.7	*11.0	2.8	3.1	3.5	3.2	*1.8	1.6
August	*0.7	5.6	6.3	2.1	8.4	*23.5	4.3	4.7	4.4	4.6	*3.1	2.5
September	*0.7	4.3	5.0	2.4	7.4	*20.8	3.2	3.6	5.3	4.0	*3.0	1.9
October	*0.5	4.9	5.5	1.7	7.2	*15.1	3.7	4.0	3.9	4.0	*2.3	2.2
November	*0.5	4.4	4.9	2.0	6.9	*16.1	3.3	3.5	4.7	3.8	*2.0	2.0
December	*0.4	3.1	3.5	1.8	5.3	*11.7	2.3	2.5	3.9	2.9	*1.9	1.4
2003												
January	1.3	5.1	6.4	2.4	8.8	28.5	3.9	4.7	5.7	4.9	5.6	2.3
February	1.1	5.0	6.1	3.5	9.5	22.1	3.8	4.4	7.9	5.3	4.8	2.2
March	*0.9	5.4	6.3	2.9	9.1	*23.0	4.3	4.8	5.8	5.1	*3.8	2.4
April	*0.8	3.6	4.4	2.7	7.0	*19.8	2.9	3.4	5.3	3.9	*3.3	1.6
May	*0.9	4.0	4.9	3.6	8.4	*20.7	3.2	3.8	7.0	4.7	*3.9	1.8
June	*0.9	4.2	5.0	1.7	6.7	*22.0	3.4	4.0	3.2	3.8	*3.8	1.8
July	*1.0	4.6	5.6	1.3	6.9	*21.3	3.6	4.2	2.9	3.9	*4.4	2.0
August	*1.0	4.3	5.3	2.7	8.0	*28.5	3.4	4.1	5.4	4.5	*4.4	1.9

* estimate is subject to sampling variability too high for most practical purposes

Month	SEASONALLY ADJUSTED					TREND					Civilian population aged 15 and over '000
	Employed full time '000	Total employed '000	Total unemployed '000	Unemployment rate %	Participation rate %	Employed full time '000	Total employed '000	Total unemployed '000	Unemployment rate %	Participation rate %	
MALES											
2002											
June	1 486.1	1 739.9	118.2	6.4	71.5	1 493.7	1 738.0	116.3	6.3	71.4	2 597.1
July	1 493.1	1 738.2	114.2	6.2	71.2	1 494.5	1 740.6	112.9	6.1	71.3	2 600.0
August	1 497.8	1 747.2	106.1	5.7	71.2	1 495.9	1 743.1	109.8	5.9	71.2	2 602.9
September	1 501.3	1 740.4	110.3	6.0	71.0	1 497.8	1 746.0	107.8	5.8	71.1	2 605.7
October	1 497.4	1 754.3	101.0	5.4	71.1	1 500.8	1 750.0	106.9	5.8	71.2	2 608.1
November	1 502.7	1 754.6	107.1	5.8	71.3	1 504.7	1 755.1	107.0	5.7	71.3	2 610.5
December	1 505.6	1 748.3	111.8	6.0	71.2	1 508.3	1 760.2	108.0	5.8	71.5	2 612.9
2003											
January	1 512.7	1 769.2	111.9	6.0	71.9	1 510.6	1 764.1	109.8	5.9	71.6	2 615.5
February	1 517.3	1 774.6	110.7	5.9	72.0	1 510.6	1 765.0	112.1	6.0	71.7	2 618.1
March	1 515.9	1 771.9	105.7	5.6	71.6	1 508.4	1 762.7	114.2	6.1	71.6	2 620.6
April	1 496.0	1 748.1	120.9	6.5	71.3	1 505.4	1 758.3	115.5	6.2	71.4	2 622.7
May	1 501.5	1 749.7	119.8	6.4	71.2	1 503.3	1 753.8	115.7	6.2	71.2	2 624.8
June	1 502.6	1 755.5	117.4	6.3	71.3	1 503.0	1 750.4	114.8	6.2	71.0	2 626.8
July	1 489.4	1 731.6	115.4	6.2	70.2	1 504.3	1 748.5	113.0	6.1	70.8	2 630.0
August	1 528.5	1 765.6	99.7	5.3	70.8	1 506.5	1 747.8	110.9	6.0	70.6	2 633.1
FEMALES											
2002											
June	768.0	1 355.9	85.6	5.9	54.1	771.3	1 353.3	82.2	5.7	53.8	2 666.8
July	769.5	1 361.1	91.8	6.3	54.4	772.5	1 354.1	83.5	5.8	53.9	2 669.6
August	791.4	1 362.5	75.7	5.3	53.8	773.7	1 356.9	84.4	5.9	53.9	2 672.5
September	775.8	1 355.9	86.2	6.0	53.9	774.8	1 361.9	84.7	5.9	54.1	2 675.4
October	755.8	1 351.1	82.2	5.7	53.5	776.9	1 369.4	85.4	5.9	54.3	2 677.8
November	782.6	1 386.9	91.0	6.2	55.1	779.8	1 378.8	86.4	5.9	54.7	2 680.2
December	786.7	1 388.1	84.5	5.7	54.9	783.3	1 388.8	87.6	5.9	55.0	2 682.6
2003											
January	785.0	1 410.8	89.6	6.0	55.9	786.1	1 397.6	88.1	5.9	55.3	2 685.4
February	801.6	1 404.5	89.2	6.0	55.6	787.0	1 403.1	87.8	5.9	55.5	2 688.1
March	784.5	1 395.4	90.3	6.1	55.2	785.5	1 404.1	87.1	5.8	55.4	2 690.8
April	768.1	1 402.9	81.7	5.5	55.1	782.1	1 401.6	86.6	5.8	55.3	2 692.9
May	784.9	1 404.3	84.7	5.7	55.3	779.2	1 398.4	86.4	5.8	55.1	2 695.1
June	778.5	1 396.4	83.0	5.6	54.8	777.7	1 395.3	86.5	5.8	54.9	2 697.3
July	770.2	1 384.0	98.3	6.6	54.9	777.0	1 392.1	86.6	5.9	54.8	2 700.7
August	784.8	1 390.6	81.0	5.5	54.4	776.4	1 389.9	86.8	5.9	54.6	2 704.2
PERSONS											
2002											
June	2 254.1	3 095.8	203.8	6.2	62.7	2 265.0	3 091.2	198.5	6.0	62.5	5 263.9
July	2 262.6	3 099.3	206.0	6.2	62.7	2 267.0	3 094.6	196.5	6.0	62.5	5 269.6
August	2 289.2	3 109.7	181.8	5.5	62.4	2 269.6	3 100.0	194.2	5.9	62.4	5 275.4
September	2 277.1	3 096.3	196.5	6.0	62.3	2 272.7	3 107.9	192.5	5.8	62.5	5 281.1
October	2 253.1	3 105.3	183.2	5.6	62.2	2 277.7	3 119.4	192.2	5.8	62.6	5 285.9
November	2 285.3	3 141.5	198.1	5.9	63.1	2 284.5	3 133.9	193.4	5.8	62.9	5 290.7
December	2 292.3	3 136.4	196.3	5.9	62.9	2 291.6	3 149.0	195.7	5.9	63.2	5 295.6
2003											
January	2 297.7	3 180.0	201.5	6.0	63.8	2 296.7	3 161.7	197.9	5.9	63.4	5 300.8
February	2 318.9	3 179.1	199.9	5.9	63.7	2 297.6	3 168.1	199.9	5.9	63.5	5 306.1
March	2 300.3	3 167.3	196.0	5.8	63.3	2 293.9	3 166.7	201.3	6.0	63.4	5 311.4
April	2 264.2	3 151.0	202.5	6.0	63.1	2 287.5	3 159.9	202.1	6.0	63.2	5 315.6
May	2 286.4	3 154.0	204.5	6.1	63.1	2 282.5	3 152.2	202.1	6.0	63.0	5 319.9
June	2 281.1	3 151.9	200.4	6.0	63.0	2 280.7	3 145.7	201.3	6.0	62.9	5 324.1
July	2 259.6	3 115.7	213.7	6.4	62.5	2 281.2	3 140.6	199.6	6.0	62.7	5 330.7
August	2 313.3	3 156.2	180.8	5.4	62.5	2 282.9	3 137.8	197.6	5.9	62.5	5 337.3

(a) Trend estimates for February 2003 to July 2003 have been revised.

Month	SEASONALLY ADJUSTED					TREND					Civilian population aged 15 and over '000
	Employed full time '000	Total employed '000	Total unemp-loyed '000	Unemp-loyment rate %	Partic-ipation rate %	Employed full time '000	Total employed '000	Total unemp-loyed '000	Unemp-loyment rate %	Partic-ipation rate %	
MALES											
2002											
June	1 129.4	1 318.0	86.6	6.2	72.7	1 126.6	1 314.1	83.0	5.9	72.3	1 931.9
July	1 122.5	1 310.5	78.8	5.7	71.8	1 123.2	1 312.1	83.1	6.0	72.1	1 934.5
August	1 120.7	1 313.7	86.0	6.1	72.3	1 119.6	1 310.5	83.4	6.0	72.0	1 937.0
September	1 120.4	1 310.7	82.4	5.9	71.8	1 117.4	1 310.0	83.6	6.0	71.8	1 939.6
October	1 103.2	1 295.7	85.4	6.2	71.1	1 117.9	1 311.6	83.3	6.0	71.8	1 942.6
November	1 120.0	1 315.0	80.5	5.8	71.7	1 121.0	1 314.9	82.6	5.9	71.8	1 945.6
December	1 130.4	1 332.6	82.9	5.9	72.6	1 125.2	1 318.9	81.6	5.8	71.9	1 948.7
2003											
January	1 135.9	1 324.8	82.6	5.9	72.1	1 128.6	1 322.1	80.5	5.7	71.9	1 951.6
February	1 128.4	1 315.1	79.3	5.7	71.3	1 130.2	1 323.5	79.9	5.7	71.8	1 954.5
March	1 135.5	1 329.6	73.5	5.2	71.7	1 130.1	1 323.6	79.9	5.7	71.7	1 957.4
April	1 124.0	1 322.3	82.4	5.9	71.7	1 129.1	1 323.5	80.1	5.7	71.6	1 959.8
May	1 122.3	1 321.4	82.9	5.9	71.6	1 129.1	1 324.8	80.2	5.7	71.6	1 962.2
June	1 131.2	1 321.6	81.0	5.8	71.4	1 130.4	1 327.4	80.1	5.7	71.6	1 964.6
July	1 135.0	1 334.7	81.6	5.8	72.0	1 132.3	1 330.5	79.6	5.6	71.7	1 967.6
August	1 139.0	1 339.2	73.7	5.2	71.7	1 134.7	1 333.7	79.0	5.6	71.7	1 970.6
FEMALES											
2002											
June	558.8	1 028.7	70.1	6.4	54.9	561.6	1 037.6	62.0	5.6	54.9	2 001.3
July	559.0	1 036.2	54.8	5.0	54.4	566.2	1 041.3	62.0	5.6	55.1	2 003.9
August	580.2	1 056.4	64.8	5.8	55.9	571.5	1 046.5	62.2	5.6	55.3	2 006.6
September	579.7	1 052.4	62.1	5.6	55.5	577.1	1 053.8	62.1	5.6	55.5	2 009.3
October	577.8	1 059.9	60.2	5.4	55.7	582.1	1 063.0	61.5	5.5	55.9	2 012.0
November	583.8	1 067.3	63.2	5.6	56.1	585.3	1 072.5	60.7	5.4	56.2	2 014.8
December	588.9	1 075.8	62.3	5.5	56.4	586.6	1 080.4	60.2	5.3	56.5	2 017.5
2003											
January	587.5	1 097.9	59.6	5.1	57.3	586.0	1 085.4	60.3	5.3	56.7	2 020.2
February	590.8	1 098.9	52.5	4.6	56.9	583.6	1 086.8	61.3	5.3	56.8	2 022.9
March	565.2	1 072.5	65.9	5.8	56.2	579.5	1 083.7	63.0	5.5	56.6	2 025.6
April	584.0	1 074.8	67.5	5.9	56.3	574.1	1 076.8	64.8	5.7	56.3	2 028.2
May	571.0	1 073.2	68.5	6.0	56.2	568.7	1 068.8	66.2	5.8	55.9	2 030.9
June	555.7	1 062.1	68.5	6.1	55.6	563.8	1 061.2	66.8	5.9	55.5	2 033.6
July	559.9	1 049.3	63.5	5.7	54.6	559.7	1 054.4	66.9	6.0	55.1	2 036.8
August	557.6	1 047.6	64.5	5.8	54.5	556.4	1 049.0	66.7	6.0	54.7	2 040.1
PERSONS											
2002											
June	1 688.2	2 346.7	156.6	6.3	63.6	1 688.2	2 351.7	145.0	5.8	63.5	3 933.2
July	1 681.5	2 346.6	133.6	5.4	63.0	1 689.4	2 353.4	145.1	5.8	63.4	3 938.4
August	1 700.9	2 370.1	150.8	6.0	63.9	1 691.1	2 357.0	145.6	5.8	63.5	3 943.6
September	1 700.0	2 363.0	144.5	5.8	63.5	1 694.5	2 363.9	145.7	5.8	63.5	3 948.8
October	1 681.0	2 355.6	145.6	5.8	63.2	1 700.0	2 374.7	144.8	5.7	63.7	3 954.6
November	1 703.9	2 382.3	143.7	5.7	63.8	1 706.2	2 387.4	143.3	5.7	63.9	3 960.4
December	1 719.4	2 408.4	145.2	5.7	64.4	1 711.8	2 399.3	141.7	5.6	64.1	3 966.2
2003											
January	1 723.4	2 422.7	142.2	5.5	64.6	1 714.6	2 407.5	140.8	5.5	64.2	3 971.8
February	1 719.2	2 414.0	131.8	5.2	64.0	1 713.8	2 410.3	141.1	5.5	64.2	3 977.4
March	1 700.7	2 402.1	139.4	5.5	63.8	1 709.6	2 407.3	142.9	5.6	64.0	3 983.0
April	1 708.0	2 397.1	149.9	5.9	63.9	1 703.2	2 400.3	144.9	5.7	63.8	3 988.1
May	1 693.3	2 394.6	151.4	5.9	63.8	1 697.7	2 393.5	146.4	5.8	63.6	3 993.1
June	1 686.9	2 383.7	149.5	5.9	63.4	1 694.2	2 388.6	146.9	5.8	63.4	3 998.2
July	1 694.9	2 384.0	145.1	5.7	63.2	1 692.0	2 384.8	146.4	5.8	63.2	4 004.5
August	1 696.7	2 386.8	138.2	5.5	63.0	1 691.1	2 382.7	145.7	5.8	63.1	4 010.7

(a) Trend estimates for February 2003 to July 2003 have been revised.

Month	SEASONALLY ADJUSTED					TREND					Civilian population aged 15 and over
	Employed full time	Total employed	Total unemployed	Unemployment rate	Participation rate	Employed full time	Total employed	Total unemployed	Unemployment rate	Participation rate	
	'000	'000	'000	%	%	'000	'000	'000	%	%	'000
MALES											
2002											
June	826.4	979.3	72.6	6.9	73.1	827.5	977.3	72.7	6.9	73.0	1 438.3
July	826.7	980.1	68.3	6.5	72.8	827.6	978.8	70.8	6.7	72.8	1 441.1
August	831.0	980.9	70.8	6.7	72.8	827.6	980.4	69.8	6.6	72.7	1 443.9
September	826.8	980.4	69.0	6.6	72.5	828.5	982.8	69.4	6.6	72.7	1 446.7
October	829.9	981.9	70.7	6.7	72.6	830.7	985.9	69.4	6.6	72.8	1 449.2
November	832.0	990.7	69.0	6.5	73.0	834.0	989.3	69.9	6.6	73.0	1 451.7
December	829.9	991.2	71.7	6.7	73.1	838.2	992.6	70.6	6.6	73.1	1 454.2
2003											
January	853.0	1 002.4	69.9	6.5	73.5	842.4	995.0	71.2	6.7	73.1	1 458.2
February	848.9	996.1	67.9	6.4	72.8	845.0	995.8	71.4	6.7	73.0	1 462.3
March	841.2	991.8	79.2	7.4	73.0	845.6	995.2	71.3	6.7	72.7	1 466.3
April	845.4	991.8	70.9	6.7	72.3	844.7	993.9	70.8	6.6	72.4	1 470.2
May	851.8	999.3	64.7	6.1	72.2	843.3	993.1	70.1	6.6	72.1	1 474.0
June	828.3	986.5	70.1	6.6	71.5	842.4	993.1	69.6	6.5	71.9	1 477.9
July	841.8	991.5	69.7	6.6	71.6	842.1	993.4	69.2	6.5	71.8	1 481.2
August	850.8	1 000.1	70.1	6.6	72.1	842.9	994.4	69.0	6.5	71.7	1 484.6
FEMALES											
2002											
June	419.7	770.8	69.0	8.2	57.0	421.5	769.8	66.4	7.9	56.8	1 472.0
July	418.9	761.3	68.2	8.2	56.2	421.3	772.3	66.9	8.0	56.9	1 475.1
August	422.5	781.5	66.9	7.9	57.4	421.8	775.9	66.7	7.9	57.0	1 478.2
September	425.0	785.4	65.3	7.7	57.4	423.3	780.8	65.7	7.8	57.2	1 481.3
October	426.6	788.5	64.2	7.5	57.4	425.5	786.5	64.5	7.6	57.3	1 484.3
November	423.8	786.2	63.3	7.5	57.1	427.6	792.0	63.8	7.5	57.5	1 487.3
December	425.3	791.1	62.8	7.4	57.3	429.0	797.0	63.8	7.4	57.7	1 490.3
2003											
January	440.5	808.1	62.4	7.2	58.2	429.7	801.3	64.3	7.4	57.9	1 494.9
February	429.6	811.6	66.1	7.5	58.5	429.8	804.7	64.8	7.4	58.0	1 499.4
March	426.9	806.1	68.7	7.8	58.2	429.7	807.4	64.9	7.4	58.0	1 504.0
April	423.0	798.9	63.1	7.3	57.2	429.8	809.2	64.4	7.4	57.9	1 508.1
May	436.2	817.4	62.6	7.1	58.2	430.6	810.6	63.5	7.3	57.8	1 512.3
June	430.4	812.7	62.1	7.1	57.7	432.0	812.2	62.3	7.1	57.7	1 516.4
July	433.4	810.7	62.2	7.1	57.4	433.6	813.9	61.2	7.0	57.6	1 520.1
August	438.7	819.1	59.0	6.7	57.6	435.8	815.6	60.1	6.9	57.5	1 523.9
PERSONS											
2002											
June	1 246.1	1 750.1	141.6	7.5	65.0	1 249.1	1 747.1	139.0	7.4	64.8	2 910.2
July	1 245.7	1 741.4	136.5	7.3	64.4	1 248.9	1 751.1	137.7	7.3	64.8	2 916.2
August	1 253.5	1 762.4	137.7	7.2	65.0	1 249.4	1 756.4	136.5	7.2	64.8	2 922.1
September	1 251.8	1 765.8	134.3	7.1	64.9	1 251.8	1 763.6	135.0	7.1	64.9	2 928.0
October	1 256.5	1 770.4	134.9	7.1	64.9	1 256.2	1 772.4	133.9	7.0	65.0	2 933.5
November	1 255.8	1 776.9	132.3	6.9	65.0	1 261.5	1 781.3	133.7	7.0	65.2	2 939.0
December	1 255.2	1 782.4	134.5	7.0	65.1	1 267.2	1 789.6	134.5	7.0	65.3	2 944.5
2003											
January	1 293.5	1 810.6	132.3	6.8	65.8	1 272.1	1 796.3	135.5	7.0	65.4	2 953.1
February	1 278.4	1 807.7	134.0	6.9	65.6	1 274.8	1 800.5	136.2	7.0	65.4	2 961.7
March	1 268.1	1 797.9	147.9	7.6	65.5	1 275.3	1 802.6	136.1	7.0	65.3	2 970.3
April	1 268.4	1 790.8	134.0	7.0	64.6	1 274.5	1 803.1	135.2	7.0	65.1	2 978.3
May	1 288.0	1 816.7	127.3	6.5	65.1	1 273.9	1 803.7	133.6	6.9	64.9	2 986.3
June	1 258.6	1 799.2	132.2	6.8	64.5	1 274.4	1 805.2	131.9	6.8	64.7	2 994.3
July	1 275.2	1 802.2	131.8	6.8	64.4	1 275.7	1 807.2	130.5	6.7	64.6	3 001.4
August	1 289.5	1 819.3	129.1	6.6	64.8	1 278.7	1 810.0	129.1	6.7	64.5	3 008.5

(a) Trend estimates for February 2003 to July 2003 have been revised.

Month	SEASONALLY ADJUSTED					TREND					Civilian population aged 15 and over
	Employed full time	Total employed	Total unemp-loyed	Unemp-loyment rate	Partic-ipation rate	Employed full time	Total employed	Total unemp-loyed	Unemp-loyment rate	Partic-ipation rate	
	'000	'000	'000	%	%	'000	'000	'000	%	%	'000
MALES											
2002											
June	320.5	380.9	32.0	7.8	69.1	322.6	382.4	30.0	7.3	69.0	597.4
July	323.7	382.3	28.6	7.0	68.7	323.3	382.8	29.3	7.1	68.9	597.9
August	325.3	380.6	29.1	7.1	68.5	324.1	383.7	28.4	6.9	68.9	598.4
September	326.7	390.1	26.9	6.5	69.6	325.3	384.9	27.4	6.6	68.8	598.9
October	324.3	385.0	26.5	6.4	68.7	327.1	386.1	26.6	6.5	68.9	599.3
November	327.3	385.7	26.6	6.5	68.7	329.2	387.0	26.3	6.4	68.9	599.8
December	332.6	388.8	24.0	5.8	68.8	331.2	387.8	26.5	6.4	69.0	600.2
2003											
January	335.0	389.1	28.3	6.8	69.5	333.0	388.5	27.1	6.5	69.2	600.9
February	337.4	388.5	29.0	7.0	69.4	334.7	389.5	27.8	6.7	69.4	601.6
March	332.1	390.4	27.5	6.6	69.4	336.2	390.9	28.4	6.8	69.6	602.3
April	335.9	391.8	29.0	6.9	69.8	337.2	392.6	28.4	6.8	69.9	602.7
May	338.3	395.2	27.7	6.6	70.1	338.1	394.2	28.1	6.6	70.0	603.0
June	343.3	396.1	29.3	6.9	70.5	338.8	395.7	27.4	6.5	70.1	603.4
July	339.4	398.4	26.0	6.1	70.3	339.2	396.9	26.6	6.3	70.1	603.8
August	335.9	396.4	24.1	5.7	69.6	339.3	397.9	25.9	6.1	70.1	604.3
FEMALES											
2002											
June	150.1	312.6	19.6	5.9	53.4	150.7	309.9	19.6	5.9	52.9	622.5
July	150.0	306.0	19.7	6.1	52.3	150.8	309.6	19.9	6.0	52.9	623.0
August	151.1	308.7	20.1	6.1	52.7	151.1	309.2	20.1	6.1	52.8	623.5
September	152.0	309.6	20.9	6.3	53.0	152.0	309.2	20.0	6.1	52.8	624.0
October	154.6	311.1	20.0	6.0	53.0	153.6	310.1	19.6	5.9	52.8	624.4
November	154.1	311.1	19.0	5.7	52.8	156.2	312.0	19.1	5.8	53.0	624.8
December	157.8	311.9	17.9	5.4	52.8	159.4	314.5	18.5	5.6	53.3	625.2
2003											
January	163.0	318.7	17.6	5.2	53.7	162.4	317.4	18.2	5.4	53.6	625.8
February	167.3	320.1	18.3	5.4	54.0	165.0	320.2	18.0	5.3	54.0	626.3
March	168.1	325.0	18.4	5.4	54.8	166.6	322.3	18.2	5.3	54.3	626.9
April	167.6	321.6	18.4	5.4	54.2	167.0	323.4	18.5	5.4	54.5	627.1
May	165.3	326.0	18.5	5.4	54.9	166.6	323.5	18.9	5.5	54.6	627.4
June	164.2	323.6	19.4	5.6	54.6	165.9	323.1	19.3	5.6	54.6	627.6
July	168.9	320.7	20.2	5.9	54.3	165.1	322.5	19.7	5.8	54.5	628.1
August	161.1	320.4	20.1	5.9	54.2	164.2	321.8	20.0	5.9	54.4	628.4
PERSONS											
2002											
June	470.6	693.4	51.6	6.9	61.1	473.2	692.3	49.6	6.7	60.8	1 219.9
July	473.6	688.3	48.3	6.6	60.3	474.1	692.4	49.2	6.6	60.7	1 220.9
August	476.4	689.3	49.1	6.7	60.4	475.2	692.9	48.5	6.5	60.7	1 221.9
September	478.7	699.7	47.8	6.4	61.1	477.3	694.1	47.4	6.4	60.6	1 222.9
October	478.9	696.1	46.5	6.3	60.7	480.8	696.2	46.2	6.2	60.7	1 223.7
November	481.3	696.8	45.6	6.1	60.6	485.4	699.0	45.4	6.1	60.8	1 224.6
December	490.4	700.7	41.9	5.6	60.6	490.5	702.3	45.1	6.0	61.0	1 225.4
2003											
January	498.0	707.8	45.9	6.1	61.4	495.4	705.9	45.3	6.0	61.2	1 226.7
February	504.7	708.6	47.4	6.3	61.6	499.8	709.6	45.8	6.1	61.5	1 227.9
March	500.2	715.4	46.0	6.0	61.9	502.8	713.2	46.5	6.1	61.8	1 229.2
April	503.6	713.4	47.5	6.2	61.9	504.3	715.9	47.0	6.2	62.0	1 229.8
May	503.6	721.2	46.2	6.0	62.4	504.7	717.7	47.0	6.1	62.1	1 230.4
June	507.5	719.6	48.7	6.3	62.4	504.7	718.8	46.8	6.1	62.2	1 231.0
July	508.3	719.1	46.2	6.0	62.1	504.3	719.4	46.3	6.1	62.2	1 231.9
August	497.1	716.8	44.2	5.8	61.7	503.5	719.7	45.9	6.0	62.1	1 232.7

(a) Trend estimates for February 2003 to July 2003 have been revised.

Month	SEASONALLY ADJUSTED					TREND					Civilian population aged 15 and over
	Employed full time	Total employed	Total unemp-loyed	Unemp-loyment rate	Partic-ipation rate	Employed full time	Total employed	Total unemp-loyed	Unemp-loyment rate	Partic-ipation rate	
	'000	'000	'000	%	%	'000	'000	'000	%	%	'000
MALES											
2002											
June	458.5	546.5	35.1	6.0	75.8	456.0	539.7	39.3	6.8	75.5	767.3
July	449.0	535.8	39.7	6.9	74.9	454.6	540.3	39.4	6.8	75.4	768.5
August	451.4	540.2	40.1	6.9	75.4	453.8	540.8	39.3	6.8	75.4	769.6
September	456.1	541.1	40.8	7.0	75.5	453.9	541.3	39.2	6.8	75.3	770.8
October	458.1	543.4	36.7	6.3	75.2	455.3	542.1	38.9	6.7	75.3	771.8
November	454.9	543.6	39.2	6.7	75.4	458.1	543.4	38.4	6.6	75.3	772.7
December	460.8	543.9	37.7	6.5	75.2	461.8	545.2	37.7	6.5	75.3	773.6
2003											
January	464.6	546.9	38.3	6.5	75.5	465.8	547.3	36.8	6.3	75.4	774.9
February	471.3	549.7	35.5	6.1	75.4	469.7	549.7	36.1	6.2	75.5	776.1
March	475.5	552.4	32.3	5.5	75.2	472.7	552.1	35.5	6.0	75.6	777.3
April	472.1	553.3	37.4	6.3	75.9	474.0	553.8	35.0	5.9	75.6	778.6
May	478.5	556.6	35.7	6.0	76.0	473.8	554.8	34.5	5.9	75.6	779.8
June	474.4	558.6	32.7	5.5	75.7	472.7	555.0	34.1	5.8	75.4	781.0
July	464.9	552.4	33.4	5.7	74.9	471.4	554.7	33.7	5.7	75.2	782.5
August	469.8	551.0	33.5	5.7	74.6	469.8	554.1	33.5	5.7	75.0	783.9
FEMALES											
2002											
June	211.3	418.2	23.0	5.2	57.4	211.5	418.0	22.5	5.1	57.3	768.2
July	208.5	420.1	21.4	4.9	57.4	211.4	418.5	22.7	5.1	57.4	769.3
August	213.4	417.9	24.7	5.6	57.4	211.1	419.4	23.3	5.3	57.5	770.5
September	212.4	423.6	23.1	5.2	57.9	211.3	421.2	23.9	5.4	57.7	771.7
October	209.2	420.6	25.5	5.7	57.7	211.9	423.4	24.4	5.5	58.0	772.7
November	209.9	422.5	21.3	4.8	57.4	212.6	425.3	24.8	5.5	58.2	773.6
December	215.1	427.4	29.3	6.4	59.0	213.1	426.6	24.9	5.5	58.3	774.6
2003											
January	219.2	434.7	24.9	5.4	59.2	213.6	427.1	24.5	5.4	58.2	775.9
February	214.7	427.1	22.6	5.0	57.9	214.4	426.7	24.1	5.3	58.0	777.2
March	205.9	419.0	23.5	5.3	56.8	215.3	425.5	23.9	5.3	57.7	778.5
April	216.6	423.6	24.1	5.4	57.4	215.9	424.0	24.3	5.4	57.5	779.8
May	222.0	424.6	24.0	5.3	57.4	216.3	422.7	25.1	5.6	57.3	781.0
June	219.4	424.8	25.0	5.6	57.5	216.5	421.7	26.3	5.9	57.3	782.3
July	214.2	417.3	31.2	7.0	57.2	216.3	420.9	27.6	6.1	57.2	783.9
August	212.5	421.0	28.3	6.3	57.2	216.1	420.6	28.8	6.4	57.3	785.4
PERSONS											
2002											
June	669.8	964.6	58.1	5.7	66.6	667.5	957.8	61.8	6.1	66.4	1 535.4
July	657.5	955.9	61.2	6.0	66.1	666.0	958.9	62.1	6.1	66.4	1 537.8
August	664.7	958.0	64.8	6.3	66.4	664.9	960.2	62.6	6.1	66.4	1 540.1
September	668.5	964.7	64.0	6.2	66.7	665.2	962.5	63.1	6.2	66.5	1 542.5
October	667.3	964.0	62.1	6.1	66.4	667.3	965.5	63.4	6.2	66.6	1 544.4
November	664.8	966.1	60.5	5.9	66.4	670.7	968.7	63.2	6.1	66.7	1 546.3
December	675.9	971.3	67.0	6.5	67.1	674.9	971.8	62.6	6.0	66.8	1 548.3
2003											
January	683.8	981.7	63.2	6.0	67.4	679.5	974.5	61.4	5.9	66.8	1 550.8
February	685.9	976.8	58.1	5.6	66.6	684.1	976.5	60.2	5.8	66.7	1 553.3
March	681.3	971.4	55.8	5.4	66.0	687.9	977.6	59.5	5.7	66.7	1 555.8
April	688.6	976.9	61.5	5.9	66.6	689.9	977.9	59.2	5.7	66.5	1 558.3
May	700.5	981.2	59.7	5.7	66.7	690.1	977.4	59.6	5.7	66.4	1 560.8
June	693.8	983.4	57.7	5.5	66.6	689.3	976.7	60.4	5.8	66.3	1 563.4
July	679.1	969.7	64.6	6.2	66.0	687.8	975.6	61.3	5.9	66.2	1 566.3
August	682.3	971.9	61.7	6.0	65.9	686.0	974.7	62.2	6.0	66.1	1 569.3

(a) Trend estimates for February 2003 to July 2003 have been revised.

Month	SEASONALLY ADJUSTED					TREND					Civilian population aged 15 and over '000
	Employed full time '000	Total employed '000	Total unemployed '000	Unemployment rate %	Participation rate %	Employed full time '000	Total employed '000	Total unemployed '000	Unemployment rate %	Participation rate %	
MALES											
2002											
June	93.4	109.2	11.5	9.5	66.4	92.8	108.3	11.4	9.5	65.9	181.6
July	92.1	107.6	11.5	9.7	65.6	93.0	108.6	11.2	9.3	65.9	181.7
August	93.9	109.4	10.5	8.7	66.0	93.4	109.2	10.9	9.1	66.1	181.8
September	94.4	110.2	11.1	9.2	66.7	93.9	109.7	10.8	8.9	66.3	181.8
October	93.3	109.3	10.5	8.8	65.9	94.3	110.1	10.9	9.0	66.5	181.9
November	95.1	111.6	10.0	8.3	66.9	94.6	110.3	11.3	9.3	66.8	182.0
December	94.8	110.2	12.7	10.3	67.5	94.8	110.3	11.7	9.6	67.0	182.1
2003											
January	96.1	110.5	11.7	9.6	67.1	94.8	110.3	12.1	9.9	67.1	182.3
February	94.0	109.1	13.2	10.8	67.0	94.8	110.3	12.2	10.0	67.2	182.5
March	93.8	110.2	12.6	10.3	67.2	94.8	110.5	12.0	9.8	67.0	182.7
April	95.3	111.8	10.6	8.6	66.9	95.0	110.9	11.4	9.3	66.9	182.9
May	95.9	111.8	10.2	8.4	66.6	95.3	111.4	10.7	8.8	66.7	183.2
June	94.9	110.4	11.5	9.4	66.5	95.7	111.9	10.1	8.3	66.5	183.4
July	96.7	113.3	8.0	6.6	66.1	96.1	112.4	9.6	7.9	66.4	183.7
August	96.8	113.0	9.7	7.9	66.7	96.6	112.9	9.1	7.5	66.4	183.9
FEMALES											
2002											
June	41.7	90.3	7.4	7.6	50.8	42.2	89.9	7.1	7.4	50.4	192.4
July	42.0	89.6	8.1	8.3	50.7	42.5	89.8	7.4	7.6	50.5	192.5
August	43.0	90.1	7.3	7.5	50.5	43.0	89.5	7.6	7.8	50.4	192.6
September	44.4	88.8	7.8	8.1	50.1	43.5	89.3	7.7	7.9	50.3	192.7
October	44.3	89.3	7.5	7.8	50.2	44.1	89.2	7.7	7.9	50.2	192.8
November	43.2	88.0	7.2	7.5	49.3	44.5	89.3	7.6	7.9	50.2	193.0
December	46.2	90.5	8.3	8.4	51.1	44.7	89.7	7.6	7.8	50.4	193.1
2003											
January	44.0	90.8	7.1	7.3	50.7	44.7	90.4	7.6	7.8	50.7	193.3
February	45.6	90.6	8.1	8.3	51.0	44.7	91.0	7.6	7.7	50.9	193.5
March	44.5	91.5	7.4	7.5	51.0	44.8	91.6	7.5	7.5	51.1	193.8
April	43.8	92.6	6.6	6.6	51.1	45.1	92.0	7.3	7.3	51.2	194.1
May	46.2	93.5	7.6	7.5	52.0	45.7	92.5	7.1	7.1	51.2	194.4
June	45.8	91.3	7.1	7.2	50.5	46.3	93.0	6.9	6.9	51.3	194.6
July	48.1	92.8	6.8	6.9	51.1	47.1	93.5	6.6	6.6	51.4	194.9
August	48.0	95.5	5.7	5.7	51.9	47.6	93.9	6.4	6.3	51.4	195.2
PERSONS											
2002											
June	135.2	199.5	18.9	8.7	58.4	135.0	198.2	18.5	8.5	57.9	374.0
July	134.1	197.2	19.6	9.0	57.9	135.5	198.4	18.5	8.5	58.0	374.2
August	137.0	199.5	17.7	8.2	58.0	136.3	198.7	18.5	8.5	58.0	374.4
September	138.8	199.0	18.9	8.7	58.2	137.4	199.0	18.4	8.5	58.1	374.6
October	137.6	198.6	18.0	8.3	57.8	138.5	199.3	18.6	8.5	58.1	374.8
November	138.3	199.6	17.2	7.9	57.8	139.1	199.6	18.9	8.7	58.3	374.9
December	141.0	200.7	20.9	9.4	59.1	139.5	200.0	19.3	8.8	58.5	375.1
2003											
January	140.1	201.3	18.9	8.6	58.6	139.5	200.7	19.7	8.9	58.7	375.6
February	139.6	199.6	21.4	9.7	58.8	139.5	201.3	19.8	8.9	58.8	376.0
March	138.3	201.6	20.0	9.0	58.9	139.6	202.1	19.4	8.8	58.8	376.5
April	139.1	204.4	17.1	7.7	58.8	140.1	202.9	18.7	8.4	58.8	377.0
May	142.1	205.3	17.8	8.0	59.1	141.0	203.9	17.8	8.0	58.7	377.5
June	140.7	201.7	18.6	8.4	58.3	142.1	204.9	17.0	7.7	58.7	378.0
July	144.8	206.1	14.9	6.7	58.4	143.2	205.9	16.2	7.3	58.7	378.6
August	144.8	208.5	15.4	6.9	59.1	144.3	206.8	15.5	7.0	58.7	379.1

(a) Trend estimates for February 2003 to July 2003 have been revised.

LABOUR FORCE STATUS (AGED 15 AND OVER), Northern Territory(a)

TREND						
Month	Employed full time '000	Total employed '000	Total unemployed '000	Unemp- loyment rate %	Partic- ipation rate %	Civilian population aged 15 and over '000
MALES						
2002						
June	45.2	55.9	3.1	5.3	79.8	74.0
July	45.2	55.6	3.0	5.1	79.2	74.0
August	45.0	55.2	2.9	5.1	78.6	73.9
September	44.9	54.7	3.0	5.2	78.1	73.9
October	44.9	54.4	3.1	5.4	77.9	73.9
November	45.0	54.4	3.2	5.6	78.0	73.8
December	45.2	54.6	3.3	5.7	78.6	73.8
2003						
January	45.3	55.0	3.4	5.9	79.2	73.7
February	45.3	55.2	3.6	6.1	79.7	73.7
March	45.2	55.2	3.7	6.4	79.9	73.7
April	45.1	55.0	3.8	6.5	79.7	73.8
May	44.9	54.7	3.7	6.4	79.1	73.9
June	44.7	54.3	3.5	6.1	78.3	74.0
July	44.4	54.0	3.3	5.7	77.4	74.0
August	44.1	53.7	3.0	5.2	76.6	73.9
FEMALES						
2002						
June	29.3	44.4	1.9	4.1	67.4	68.7
July	29.5	44.2	1.9	4.1	67.1	68.6
August	29.8	44.0	1.9	4.2	67.0	68.5
September	30.1	44.1	1.9	4.2	67.2	68.5
October	30.2	44.2	2.0	4.3	67.5	68.4
November	30.1	44.3	2.1	4.4	67.8	68.4
December	29.8	44.4	2.2	4.7	68.1	68.4
2003						
January	29.4	44.2	2.5	5.3	68.3	68.3
February	28.9	43.7	2.8	6.0	68.1	68.3
March	28.5	43.0	3.0	6.6	67.5	68.2
April	28.2	42.2	3.2	7.0	66.5	68.2
May	28.1	41.5	3.2	7.1	65.5	68.3
June	28.1	40.8	3.1	7.1	64.4	68.3
July	28.0	40.3	3.0	6.9	63.3	68.3
August	28.1	39.8	2.8	6.6	62.4	68.3
PERSONS						
2002						
June	74.5	100.3	5.1	4.8	73.9	142.6
July	74.7	99.8	4.9	4.7	73.4	142.6
August	74.9	99.2	4.9	4.7	73.0	142.5
September	75.0	98.8	5.0	4.8	72.8	142.4
October	75.1	98.6	5.1	4.9	72.9	142.3
November	75.1	98.7	5.3	5.1	73.1	142.2
December	75.0	99.0	5.5	5.3	73.5	142.1
2003						
January	74.7	99.1	5.9	5.6	73.9	142.0
February	74.2	98.9	6.4	6.0	74.1	142.0
March	73.7	98.2	6.8	6.5	73.9	141.9
April	73.3	97.2	7.0	6.7	73.4	142.0
May	73.1	96.2	6.9	6.7	72.5	142.2
June	72.8	95.2	6.6	6.5	71.6	142.3
July	72.4	94.3	6.2	6.2	70.7	142.2
August	72.2	93.5	5.8	5.8	69.8	142.2

(a) Trend estimates for February 2003 to July 2003 have been revised. Estimates for the most recent three months may be subject to significant revisions as data for later months become available.

TREND						
Month	Employed full time '000	Total employed '000	Total unemployed '000	Unemp- loyment rate %	Partic- ipation rate %	Civilian population aged 15 and over '000
MALES						
2002						
June	75.9	89.1	4.4	4.7	77.3	121.0
July	76.5	89.8	4.4	4.7	77.8	121.1
August	77.1	90.3	4.4	4.7	78.2	121.1
September	77.8	90.8	4.5	4.7	78.5	121.2
October	78.2	91.0	4.5	4.7	78.7	121.5
November	78.4	91.1	4.6	4.9	78.7	121.7
December	78.2	91.0	4.8	5.0	78.6	121.9
2003						
January	77.6	90.8	4.8	5.0	78.4	122.0
February	76.7	90.6	4.7	5.0	78.1	122.0
March	75.8	90.4	4.6	4.9	77.8	122.0
April	74.9	90.2	4.4	4.7	77.5	122.1
May	74.3	90.1	4.2	4.5	77.2	122.2
June	73.9	90.0	4.1	4.3	76.9	122.3
July	73.6	90.0	4.0	4.2	76.7	122.5
August	73.5	90.0	3.9	4.2	76.6	122.6
FEMALES						
2002						
June	51.6	82.3	3.4	4.0	67.8	126.4
July	52.2	82.6	3.5	4.0	68.1	126.5
August	52.8	83.0	3.4	3.9	68.2	126.7
September	53.4	83.3	3.2	3.7	68.2	126.8
October	54.0	83.5	3.0	3.5	68.1	127.0
November	54.2	83.5	2.8	3.3	67.9	127.1
December	53.9	83.4	2.7	3.2	67.7	127.3
2003						
January	53.0	83.1	2.8	3.2	67.5	127.4
February	52.0	82.7	2.9	3.4	67.2	127.4
March	51.0	82.2	3.0	3.6	66.8	127.5
April	50.5	81.7	3.2	3.8	66.5	127.6
May	50.4	81.3	3.4	4.0	66.3	127.7
June	50.6	81.0	3.5	4.2	66.0	127.9
July	50.9	80.7	3.7	4.4	65.9	128.1
August	51.3	80.6	3.8	4.6	65.8	128.3
PERSONS						
2002						
June	127.5	171.4	7.9	4.4	72.5	247.4
July	128.7	172.4	7.9	4.4	72.8	247.6
August	129.9	173.3	7.8	4.3	73.1	247.8
September	131.2	174.0	7.7	4.2	73.2	248.1
October	132.2	174.5	7.5	4.1	73.3	248.5
November	132.6	174.6	7.5	4.1	73.2	248.8
December	132.1	174.4	7.5	4.1	73.0	249.2
2003						
January	130.6	174.0	7.5	4.2	72.8	249.3
February	128.7	173.3	7.6	4.2	72.5	249.4
March	126.8	172.6	7.6	4.2	72.2	249.5
April	125.4	171.9	7.6	4.3	71.9	249.8
May	124.7	171.4	7.6	4.2	71.6	250.0
June	124.5	171.0	7.6	4.2	71.4	250.2
July	124.6	170.7	7.6	4.3	71.2	250.6
August	124.9	170.5	7.8	4.4	71.1	250.9

(a) Trend estimates for February 2003 to July 2003 have been revised. Estimates for the most recent three months may be subject to significant revisions as data for later months become available.

WHAT IF...? REVISIONS TO TREND ESTIMATES

EFFECT OF NEW SEASONALLY ADJUSTED ESTIMATES ON TREND ESTIMATES

TREND REVISIONS

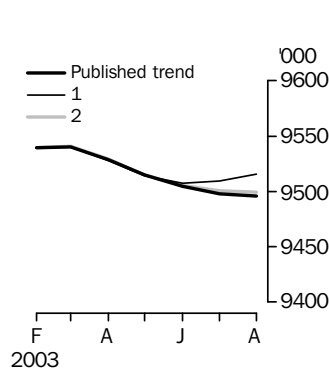
Each time new seasonally adjusted estimates become available, trend estimates are revised (see paragraphs 19 and 20 of Explanatory Notes).

The examples in the tables below show two illustrative scenarios and the consequent revisions to previous trend estimates of employment and the unemployment rate.

- (1) The September seasonally adjusted estimate is *higher* than the August estimate by:
 - 0.30% for employment
 - 1.90% for the unemployment rate
- (2) The September seasonally adjusted estimate is *lower* than the August estimate by:
 - 0.30% for employment
 - 1.90% for the unemployment rate

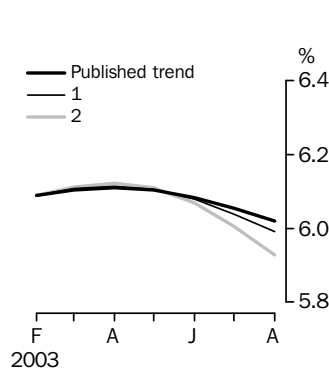
The percentage changes of 0.30% and 1.90% were chosen because they represent the average absolute monthly percentage changes in employment and the unemployment rate respectively.

EMPLOYMENT



	Trend as published	WHAT IF NEXT MONTH'S SEASONALLY ADJUSTED ESTIMATE IS:	
		(1) 9561.5 i.e. rises by 0.30%	(2) 9504.3 i.e. falls by 0.30%
2003			
May	9 514.7	9 514.0	9 514.9
June	9 505.0	9 507.7	9 505.2
July	9 498.2	9 509.3	9 500.8
August	9 496.1	9 515.3	9 499.4

UNEMPLOYMENT RATE



	Trend as published	WHAT IF NEXT MONTH'S SEASONALLY ADJUSTED ESTIMATE IS:	
		(1) 5.9 i.e. rises by 1.90%	(2) 5.7 i.e. falls by 1.90%
2003			
May	6.1	6.1	6.1
June	6.1	6.1	6.1
July	6.1	6.0	6.0
August	6.0	6.0	5.9

EXPLANATORY NOTES

INTRODUCTION

1 This publication contains estimates of the civilian labour force derived from the Labour Force Survey component of the Monthly Population Survey. More detailed estimates are released one week after this publication in various electronic formats - see *Labour Force, Australia, Detailed - Electronic Delivery* (cat. no. 6291.0.55.001).

CONCEPTS, SOURCES AND METHODS

2 The conceptual framework used in Australia's Labour Force Survey aligns closely with the standards and guidelines set out in Resolutions of the International Conference of Labour Statisticians. Descriptions of the underlying concepts and structure of Australia's labour force statistics, and the sources and methods used in compiling the estimates, are presented in *Labour Statistics: Concepts, Sources and Methods* (cat. no. 6102.0) which is also available on the ABS web site <<http://www.abs.gov.au>> (About Statistics—Concepts and Classifications).

MONTHLY POPULATION SURVEY

3 The population survey is based on a multi-stage area sample of private dwellings (currently about 30,000 houses, flats, etc.) and a list sample of non-private dwellings (hotels, motels, etc.), and covers about 0.45% of the population of Australia. The information is obtained from the occupants of selected dwellings by specially trained interviewers. The information obtained relates to the week before the interview (i.e. the reference week).

4 Households selected for the Labour Force Survey are interviewed each month for 8 months, with one eighth of the sample being replaced each month. The first interview is conducted face-to-face. Subsequent interviews are conducted by telephone (if acceptable to the respondent).

5 The interviews are generally conducted during the two weeks beginning on the Monday between the 6th and 12th of each month. Each year, to deal with operational difficulties involved with collecting and processing the Labour Force Survey around the Christmas and New Year holiday period, interviews for December start four weeks after November interviews start, and January interviews start five weeks after December interviews start. As a result, January interviewing may commence as early as the 8th or as late as the 14th, depending on the year. Occasionally, circumstances that present significant operational difficulties for survey collection can result in a change to the normal pattern for the start of interviewing.

6 Estimates from the Labour Force Survey are published first in this publication 31 days after the commencement of interviews for that month, with the exception of estimates for each December which are published 38 days after the commencement of interviews.

SCOPE OF SURVEY

7 The Labour Force Survey includes all persons aged 15 and over except members of the permanent defence forces, certain diplomatic personnel of overseas governments customarily excluded from census and estimated population counts, overseas residents in Australia, and members of non-Australian defence forces (and their dependants) stationed in Australia.

COVERAGE

8 In the Labour Force Survey, coverage rules are applied which aim to ensure that each person is associated with only one dwelling, and hence has only one chance of selection. The coverage rules are necessarily a balance between theoretical and operational considerations. Nevertheless, the chance of a person being enumerated at two separate dwellings in the survey is considered to be negligible.

EXPLANATORY NOTES *continued*

POPULATION BENCHMARKS

9 Labour Force Survey estimates are calculated in such a way as to add up to independent estimates of the civilian population aged 15 and over (population benchmarks). From February 1999, labour force estimates have been compiled using benchmarks based on the results of the 1996 Census of Population and Housing. Small revisions were made to many of the historical estimates from January 1995 to January 1999. The ABS expects to introduce new benchmarks, based on the 2001 Census, in February 2004.

COMPARABILITY OF SERIES

10 From April 1986, the definition of employed persons was changed to include persons who worked without pay between 1 and 14 hours per week in a family business or on a farm (i.e. contributing family workers). For further information, see paragraphs 36 and 37 of the Explanatory Notes to the February 1987 issue of *Labour Force, Australia* (cat. no. 6203.0).

11 The ABS introduced telephone interviewing into the Labour Force Survey in August 1996. Implementation was phased in for each new sample group from August 1996 to February 1997. During the period of implementation, the new method produced different estimates than would have been obtained under the old methodology. The effect dissipated over the final months of implementation and was no longer discernible from February 1997. The estimates for February 1997 and onwards are directly comparable to estimates for periods prior to August 1996. For further details, see the feature article in the June 1997 issue of *Labour Force, Australia* (cat. no. 6203.0).

12 From April 2001 the Labour Force Survey has been conducted using a redesigned questionnaire containing additional data items and some minor definitional changes. Core labour force series were revised for the period April 1986 to March 2001 to ensure continuity. For further details, see *Information Paper: Implementing the Redesigned Labour Force Survey Questionnaire* (cat. no. 6295.0) and *Information Paper: Questionnaires Used in the Labour Force Survey* (cat. no. 6232.0).

SURVEY SAMPLE REDESIGN

13 The Labour Force Survey sample was last reselected using information collected in the 2001 Census of Population and Housing.

14 The bulk of the new sample was phased in over the period November 2002 to June 2003, with one eighth of this portion of the sample being introduced every month. The remainder of the sample (about 18% of the total), which covers less settled areas of Australia and non-private dwellings was rotated in full for New South Wales, Victoria, Tasmania, Northern Territory and Australian Capital Territory in November 2002, and for Queensland, South Australia and Western Australia in December 2002. Such a pattern of implementation means that any changes to labour force estimates due to differences between the two samples, or any other influences, were spread over the eight months.

15 For further details, see *Information Paper: Labour Force Survey Sample Design* (cat. no. 6269.0).

EXPLANATORY NOTES *continued*

RELIABILITY OF ESTIMATES

16 Two types of error are possible in an estimate based on a sample survey: sampling error and non-sampling error.

Sampling error occurs because a sample, rather than the entire population, is surveyed. One measure of the likely difference resulting from not including all dwellings in the survey is given by the standard error. There are about two chances in three that a sample estimate will differ by less than one standard error from the figure that would have been obtained if all dwellings had been included in the survey, and about nineteen chances in twenty that the difference will be less than two standard errors. Standard errors of estimates for the latest month and of estimates of movements since the previous month are shown on pages 31 and 32. Standard errors of other estimates and other movements may be determined by using information in the Technical Notes in *Labour Force, Australia* (cat. no. 6203.0).

Non sampling error arises from inaccuracies in collecting, recording and processing the data. Every effort is made to minimise reporting error by the careful design of questionnaires, intensive training and supervision of interviewers, and efficient data processing procedures.

SEASONAL ADJUSTMENT AND TREND ESTIMATION

17 Seasonally adjusted series are published in Tables 2, 5 and 12 to 17. Seasonal factors are reviewed annually to take account of each additional year's original data. The results of the latest review were used to compile the seasonally adjusted and trend estimates given in this publication. Information about the last annual review of seasonal factors was published in a feature article in the February 2003 issue of *Labour Force, Australia* (cat no. 6203.0).

18 Seasonal adjustment is a means of removing the estimated effects of normal seasonal variation from the series so that the effects of other influences on the series can be more clearly recognised. Seasonal adjustment does not aim to remove the irregular or non-seasonal influences which may be present in any particular month. This means that month-to-month movements of the seasonally adjusted estimates may not be reliable indicators of trend behaviour. For example, irregular factors unrelated to the trend account for more than half the seasonally adjusted movement with the following frequency:

Employment: 6 in 10 monthly movements

Unemployment: 8 in 10 monthly movements

Unemployment rate: 7 in 10 monthly movements

Participation rate: 9 in 10 monthly movements.

19 The smoothing of seasonally adjusted series reduces the impact of the irregular component of the seasonally adjusted series, and creates trend estimates. These trend estimates are derived by applying a 13-term Henderson-weighted moving average to all months except the last six. The last six monthly trend estimates are obtained by applying surrogates of the Henderson average to the seasonally adjusted series. Trend series are used to analyse the underlying behaviour of the series over time. These are published in tables 3, 6 and 12 to 19.

20 While this smoothing technique enables estimates to be produced for the latest month, it does result in revisions to the most recent months as additional observations become available. Generally, subsequent revisions become smaller, and after three months have a negligible impact on the series. There will also be revisions as a result of the annual review of seasonal factors.

EXPLANATORY NOTES *continued*

SEASONAL ADJUSTMENT AND TREND ESTIMATION *continued*

21 Trend estimates are published for the Northern Territory in table 18 and for the Australian Capital Territory in table 19. Unadjusted series for the two territories have shown, historically, a high degree of variability, which can lead to considerable revisions to the seasonally adjusted estimates after each annual seasonal factor re-analysis. Seasonally adjusted estimates are not currently published for the two Territories. The most recent six months trend estimates are subject to revision. For the three most recent months, the revision may be relatively large. Inferences about trends drawn from smoothed seasonally adjusted (trend) estimates for months earlier than the latest three months are unlikely to be affected by month to month revisions. They may be affected by revision resulting from the annual re-analysis of seasonal factors.

22 For further information, see *A Guide to Interpreting Time Series—Monitoring 'Trends': an Overview* (cat. no. 1348.0) or contact the Assistant Director, Time Series Analysis on (02) 6252 6345.

RELATED PUBLICATIONS

23 Users may also wish to refer to *Australian Labour Market Statistics* (cat. no. 6105.0). This publication contains additional tables and a detailed list of related publications. For further information about this publication, please contact the Assistant Director, Labour Market Statistics on (02) 6252 6079.

24 ABS Information about the labour market can be found on the Labour theme page on the ABS web site <<http://www.abs.gov.au>> (Themes—People, Labour), or from ABS Bookshops.

25 Current publications and other products released by the ABS are listed in the *Catalogue of Publications and Products* (cat. no. 1101.0). The Catalogue is available from any ABS office or the ABS web site <<http://www.abs.gov.au>> (Products and Services). The ABS also issues a daily Release Advice on the web site (Information on Releases) which details products to be released in the week ahead.

DATA AVAILABLE ON REQUEST

26 As well as the statistics included in this and related publications, the ABS may have other relevant data available. Inquiries should be made to Craig Blair on (02) 6252 6525 or to any ABS office.

EFFECTS OF ROUNDING

27 Estimates have been rounded and discrepancies may occur between sums of the component items and totals.

28 Estimates of movement shown in this publication are obtained by taking the difference of unrounded estimates. The movement estimate is then rounded to one decimal place. Therefore where a discrepancy occurs between the reported movement and the difference of the rounded estimates, the reported movement will be more accurate.

SYMBOLS AND OTHER USAGES

29 SYMBOLS AND OTHER USAGES
pts percentage points

STANDARD ERRORS

STANDARD ERRORS

The estimates in this publication are based on information gained from the occupants of a sample survey of dwellings. Because the entire population is not surveyed, the published estimates are subject to sampling error. The most common way of quantifying such sampling error is to calculate the standard error for the published estimate or statistic.

LEVEL ESTIMATES

To illustrate, let us say the published level estimate for employed persons aged 15 to 19 is 700,000. The calculated standard error in this case is 9,800. The standard error is then used to interpret the level estimate of 700,000. For instance, the standard error of 9,800 indicates that:

- There are approximately two chances in three that the real value falls within the range 690,200 to 709,800 ($700,000 \pm 9,800$)
- There are approximately nineteen chances in twenty that the real value falls within the range 680,400 to 719,600 ($700,000 \pm 19,600$).

The real value in this case is the result we would obtain if we could enumerate the total population.

The following table shows the standard errors for this month's level estimates.

										AUSTRALIA										
										Males	Females	Persons								
										NSW	Vic.	Qld	SA	WA	Tas.	NT	ACT	Males	Females	Persons
Employed																				
Full time	'000	18.5	13.9	11.0	5.1	5.4	1.8	1.2	1.8	21.6	15.7	28.5								
Part time	'000	10.8	8.9	7.8	3.7	4.1	1.4	0.8	1.2	10.3	14.9	17.1								
Total	'000	22.6	17.0	12.6	5.9	6.1	2.1	1.4	2.1	23.8	20.8	38.3								
Unemployed																				
Aged 15–19 looking for f/t work	'000	2.4	1.6	1.8	0.9	1.1	0.3	0.2	0.3	3.0	2.7	3.8								
Aged 20 and over looking for f/t work	'000	4.8	3.8	3.6	1.6	2.0	0.7	0.4	0.4	6.4	5.3	7.7								
Total looking for f/t work	'000	5.0	3.9	3.9	1.7	2.1	0.8	0.4	0.5	6.8	5.7	8.1								
Looking for p/t work	'000	3.5	2.8	2.3	1.1	1.4	0.4	0.3	0.4	3.6	4.6	5.4								
Total	'000	5.5	4.4	4.3	1.9	2.4	0.8	0.5	0.6	7.2	6.7	9.1								
Labour Force	'000	23.4	17.5	12.9	6.0	6.2	2.2	1.4	2.1	24.8	21.5	40.5								
Not in labour force	'000	17.3	13.2	10.3	5.0	5.1	1.9	1.0	1.4	15.8	19.2	25.7								
Unemployment rate																				
Aged 15–19 looking for f/t work	pts	2.8	3.2	3.0	3.9	3.0	4.4	5.6	7.4	1.8	2.7	1.4								
Aged 20 and over looking for f/t work	pts	0.2	0.2	0.3	0.3	0.3	0.5	0.6	0.4	0.1	0.2	0.1								
Total looking for f/t work	pts	0.2	0.2	0.3	0.3	0.3	0.5	0.6	0.4	0.1	0.2	0.1								
Looking for p/t work	pts	0.4	0.4	0.4	0.5	0.5	0.6	1.1	0.8	0.4	0.2	0.2								
Total	pts	0.2	0.2	0.2	0.3	0.2	0.4	0.5	0.3	0.1	0.2	0.1								
Participation rate	pts	0.4	0.4	0.4	0.5	0.4	0.6	1.0	0.8	0.3	0.3	0.3								

STANDARD ERRORS *continued*

MOVEMENT ESTIMATES

The following example illustrates how to use the standard error to interpret a movement estimate. Let us say that one month the published level estimate for females employed part time in Australia is 1,890,000; the next month the published level estimate is 1,900,000. The calculated standard error for the movement estimate is 10,300. The standard error is then used to interpret the published movement estimate of 10,000. For instance, the standard error of 10,300 indicates that:

- There are approximately two chances in three that the real movement between the two months falls within the range -300 to 20,300 (10,000 + or - 10,300)
- There are approximately nineteen chances in twenty that the real movement falls within the range -10,600 to 30,600 (10,000 + or - 20,600).

The following table shows the standard errors for this month's movement estimates.

										AUSTRALIA												
																					
										Males	Females	Persons										
										NSW	Vic.	Qld	SA	WA	Tas.	NT	ACT					
Employed																						
Full time	'000	9.9	7.6	6.8	3.2	3.9	1.2	1.1	1.0	14.1	11.1	16.4										
Part time	'000	7.1	5.6	5.0	2.4	2.9	0.9	0.7	0.7	7.6	10.5	11.8										
Total	'000	11.1	8.5	7.7	3.6	4.4	1.4	1.2	1.1	15.0	13.8	18.4										
Unemployed																						
Aged 15-19 and looking for f/t work	'000	1.9	1.3	1.4	0.7	0.9	0.3	0.2	0.2	2.4	2.2	3.0										
Aged 20 and over and looking for f/t work	'000	3.7	2.8	2.6	1.1	1.5	0.5	0.3	0.4	4.9	4.2	5.9										
Total looking for f/t work	'000	3.9	2.9	2.8	1.2	1.6	0.6	0.3	0.4	5.1	4.4	6.1										
Looking for p/t work	'000	2.7	2.1	1.8	0.8	1.1	0.3	0.2	0.3	2.9	3.5	4.1										
Total	'000	4.3	3.2	3.0	1.4	1.7	0.6	0.4	0.4	5.5	5.1	6.8										
Labour force	'000	11.3	8.7	7.9	3.7	4.5	1.5	1.2	1.2	15.3	14.1	18.8										
Not in labour force	'000	9.5	7.3	6.4	3.1	3.6	1.3	0.9	0.9	11.1	13.1	15.5										
Unemployment rate																						
Aged 15-19 looking for f/t work	pts	2.2	2.6	2.4	3.0	2.5	3.5	4.7	6.0	1.5	2.2	1.1										
Aged 20 and over looking for f/t work	pts	0.2	0.2	0.2	0.2	0.2	0.4	0.5	0.3	0.1	0.2	0.1										
Total looking for f/t work	pts	0.2	0.2	0.2	0.2	0.2	0.4	0.5	0.3	0.1	0.2	0.1										
Looking for p/t work	pts	0.3	0.3	0.3	0.4	0.4	0.5	0.9	0.6	0.3	0.2	0.1										
Total	pts	0.1	0.1	0.2	0.2	0.2	0.3	0.4	0.2	0.1	0.1	0.1										
Participation rate	pts	0.2	0.2	0.3	0.3	0.3	0.4	0.8	0.5	0.2	0.2	0.1										

GLOSSARY

Actively looking for work	Includes writing, telephoning or applying in person to an employer for work; answering an advertisement for a job; checking factory noticeboards or the touchscreens at the Centrelink offices; being registered with Centrelink as a jobseeker; checking or registering with any other employment agency; advertising or tendering for work; and contacting friends or relatives.
Attending school	Persons aged 15 to 19 years enrolled at secondary or high school in the reference week.
Attending tertiary educational institution full time	Persons aged 15 to 24 years enrolled full time at a TAFE college, university, or other educational institution in the reference week, except those persons aged 15 to 19 years who were still attending school.
Civilian population aged 15 years and over	All usual residents of Australia aged 15 years and over except members of the permanent defence forces, certain diplomatic personnel of overseas governments customarily excluded from census and estimated population counts, overseas residents in Australia, and members of non-Australian defence forces (and their dependants) stationed in Australia.
Employed	<p>All persons aged 15 years and over who, during the reference week:</p> <ul style="list-style-type: none"> ■ worked for one hour or more for pay, profit, commission or payment in kind in a job or business, or on a farm (comprising employees, employers and own account workers); or ■ worked for one hour or more without pay in a family business or on a farm (i.e. contributing family workers); or ■ were employees who had a job but were not at work and were: <ul style="list-style-type: none"> ■ away from work for less than four weeks up to the end of the reference week; or ■ away from work for more than four weeks up to the end of the reference week and received pay for some or all of the four week period to the end of the reference week; or ■ away from work as a standard work or shift arrangement; or ■ on strike or locked out; or ■ on workers' compensation and expected to return to their job; or ■ were employers or own account workers, who had a job, business or farm, but were not at work.
Full-time workers	Employed persons who usually worked 35 hours or more a week (in all jobs) and those who, although usually working less than 35 hours a week, worked 35 hours or more during the reference week.
Labour force	For any group, persons who were employed or unemployed, as defined.
Labour force status	A classification of the civilian population aged 15 years and over into employed, unemployed or not in the labour force, as defined. The definitions conform closely to the international standard definitions adopted by the International Conferences of Labour Statisticians.
Not in the labour force	Persons who were not in the categories employed or unemployed as defined.
Participation rate	For any group, the labour force expressed as a percentage of the civilian population aged 15 years and over in the same group.
Part-time workers	Employed persons who usually worked less than 35 hours a week (in all jobs) and either did so during the reference week, or were not at work in the reference week.
Seasonally adjusted series	A time series of estimates with the estimated effects of normal seasonal variation removed. See Explanatory Notes 17 and 18 for more detail.
Trend series	A smoothed seasonally adjusted series of estimates. See Explanatory Notes 19 to 21 for more detail.

GLOSSARY *continued*

Unemployed	Persons aged 15 years and over who were not employed during the reference week, and: <ul style="list-style-type: none">■ had actively looked for full-time or part-time work at any time in the four weeks up to the end of the reference week and:<ul style="list-style-type: none">■ were available for work in the reference week; or■ were waiting to start a new job within four weeks from the end of the reference week and could have started in the reference week if the job had been available then.
Unemployed looking for full-time work	Unemployed persons who: <ul style="list-style-type: none">■ actively looked for full-time work and were available for work in the reference week; or■ actively looked for work and were not available for work in the reference week because they were waiting to start a new full-time job.
Unemployed looking for part-time work	Unemployed persons who: <ul style="list-style-type: none">■ actively looked for part-time work only and were available for work in the reference week; or■ actively looked for work and were not available for work in the reference week because they were waiting to start a new part-time job.
Unemployment rate	For any group, the number of unemployed persons expressed as a percentage of the labour force in the same group.
Unemployment to population ratio	For any group, the number of unemployed persons expressed as a percentage of the civilian population in the same group.

FOR MORE INFORMATION . . .

- INTERNET* **www.abs.gov.au** the ABS web site is the best place to start for access to summary data from our latest publications, information about the ABS, advice about upcoming releases, our catalogue, and Australia Now—a statistical profile.
- LIBRARY* A range of ABS publications is available from public and tertiary libraries Australia-wide. Contact your nearest library to determine whether it has the ABS statistics you require, or visit our web site for a list of libraries.
- CPI INFOLINE* For current and historical Consumer Price Index data, call 1902 981 074 (call cost 77c per minute).
- DIAL-A-STATISTIC* For the latest figures for National Accounts, Balance of Payments, Labour Force, Average Weekly Earnings, Estimated Resident Population and the Consumer Price Index call 1900 986 400 (call cost 77c per minute).

INFORMATION SERVICE

Data already published that can be provided within five minutes will be free of charge. Our information consultants can also help you to access the full range of ABS information—ABS user pays services can be tailored to your needs, time frame and budget. Publications may be purchased. Specialists are on hand to help you with analytical or methodological advice.

- PHONE* 1300 135 070
- EMAIL* client.services@abs.gov.au
- FAX* 1300 135 211
- POST* Client Services, ABS, GPO Box 796, Sydney NSW 2001

WHY NOT SUBSCRIBE?

ABS subscription services provide regular, convenient and prompt deliveries of ABS publications and products as they are released. Email delivery of monthly and quarterly publications is available.

- PHONE* 1300 366 323
- EMAIL* subscriptions@abs.gov.au
- FAX* 03 9615 7848
- POST* Subscription Services, ABS, GPO Box 2796Y, Melbourne Vic 3001



2620200008033

ISSN 1448 2819

RRP \$22.00